

ULIMWENGU WOTE

Jumapili ya 27 mwaka C

Na:A.A.Kadyugenzi

moderato! ♩ = 80

S
A

Ee Bwa na u li mwe ngu wo te

T
B

Ee Bwa na u - li mwe ngu wo te

Detailed description: This block contains the first four measures of the song. It features two vocal staves (Soprano and Alto) and two piano staves (Tenor and Bass). The key signature is one sharp (F#) and the time signature is 2/4. The tempo is marked 'moderato' with a quarter note equal to 80 beats per minute. The lyrics are: 'Ee Bwa na u li mwe ngu wo te'.

5

u ka ti ka u we za wa ko wa la ha ku na a we za ye

Detailed description: This block contains measures 5 through 8. The vocal parts continue with the lyrics: 'u ka ti ka u we za wa ko wa la ha ku na a we za ye'. The piano accompaniment provides harmonic support.

10

ku ku pi - nga u ki pe nda. nda

Ee

1. 2.

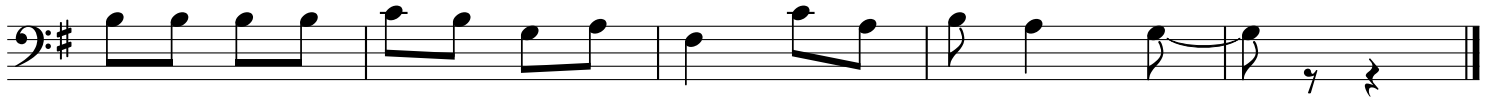
Detailed description: This block contains measures 10 through 13. The lyrics are: 'ku ku pi - nga u ki pe nda. nda'. There is a first ending (1.) and a second ending (2.) for the vocal parts. The piano part concludes with the word 'Ee'.

15



1. Wewe u me u mba yo te mbingu na n - chi na vi tu vyo te

20



vya a ja bu vi li vyo - mo chi ni ya Mbi ngu -

25



2. Kwaku wa Bwa na ni mku u mwenye ku si fi wa sa na na wa ku ho fi wa ku

31



li ko mi u ngu yo te.