

SEMENI BWANA AMELIKOMBOA TAIFA
MWANZO

Essau A. Lupembe
Mt. Kolping
Holy Heart of Jesus Parish
Sgd Singida
0768052092

$\text{♩} = 68$

S
A

T
B

Hu bi ri ni hu bi ri ni hu bi ri ni kwa sa u ti ya ku i mba

Detailed description: This block contains the first six measures of the musical score. It features two vocal parts, Soprano (S) and Alto (A), and two piano parts, Tenor (T) and Bass (B). The music is in the key of D major (two sharps) and 6/16 time. The tempo is marked as quarter note = 68. The lyrics are: 'Hu bi ri ni hu bi ri ni hu bi ri ni kwa sa u ti ya ku i mba'. The piano accompaniment consists of chords and rhythmic patterns in the right and left hands.

7

ta nga ze ni

Detailed description: This block contains measures 7 and 8 of the musical score. It continues the vocal parts and piano accompaniment. The lyrics for these measures are: 'ta nga ze ni'. The piano accompaniment continues with chords and rhythmic patterns.

8

ha ya ya ta m ke ni mpa ka mwisho wa du ni a kwa sa

Detailed description: This block contains measures 9 through 12 of the musical score. The lyrics are: 'ha ya ya ta m ke ni mpa ka mwisho wa du ni a kwa sa'. The piano accompaniment continues with chords and rhythmic patterns. There is a double bar line with repeat dots at the end of measure 12.

kwa - sa -

14

u ti ya ku i mba
 u ti ya ku i mba i mba ta nga ze ni ha ya ya ta m ke ni
 u ya ku i mba ta nga ze ni ha ya

21

mpa ka mwi sho wa du ni a

25

1)Se me ni bwa na a me li ko mbo a ta i fa la ke a me li ko mbo a

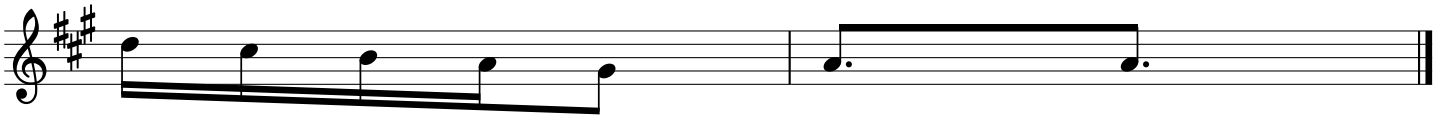
32

ta - i - fa la ke

34

2)I mbeni nyo te ta ngaze ni ma te ndoya ke Bwa na ta ngaze ni ma te

41



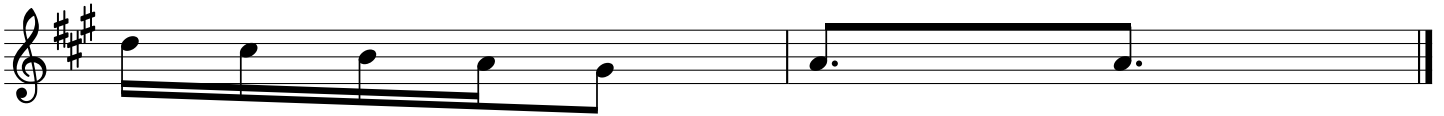
ndo - ya - ke Bwa na

43



3)Bwana ni m ku u ju u yama ta i fa ya ke yo te ju u yama ta i

50



fa - ya - ke yo te