

# Mt. Fransisco Utuombee 2

By Philipo D. Mizungwe  
Majimatitu Parish  
0766978331 18/03/2026

vivace

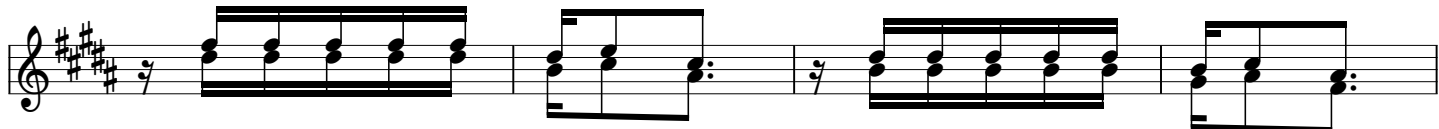
So-mo namwombe - zi wa Pa-ro - ki - a tu-o-mbee mtaka-ti-fu Fra\_

nsisco wa A - si - zi si - zi tu-ombee tu-pendane

tu-ombee tu-wena u - mo - ja tu-o-mbee i - li na-si tu-fi - kambi -

ngu - ni

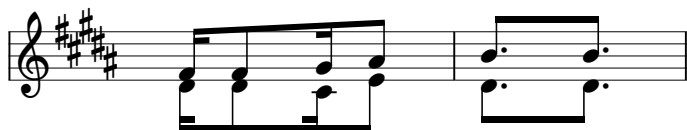
O  
R  
G  
A  
N



1. Wa-o-mbe-e na Ma-pa - dre, wa - o-mbe-e na wa-ta - wa,  
 2. Tu - o-mbe-e so - mo we - tu, tu - i - ge m - fa - no wa - ko,  
 3. Tu - o-mbe-e so - mo we - tu, tu - i - ge m - fa - no wa - ko,



1. zi - o - mbe - e Ju - mu - i - ya tu - o - mbe - e si - si so - te  
 2. wa ku - hu - bi - ri i - nji - li tu - o - mbe - e tu - wa - hu - bi -  
 3. tu - wa - ja - li wa - hi - ta - ji tu - wa - ja - ji kwa ku - wa - ga -

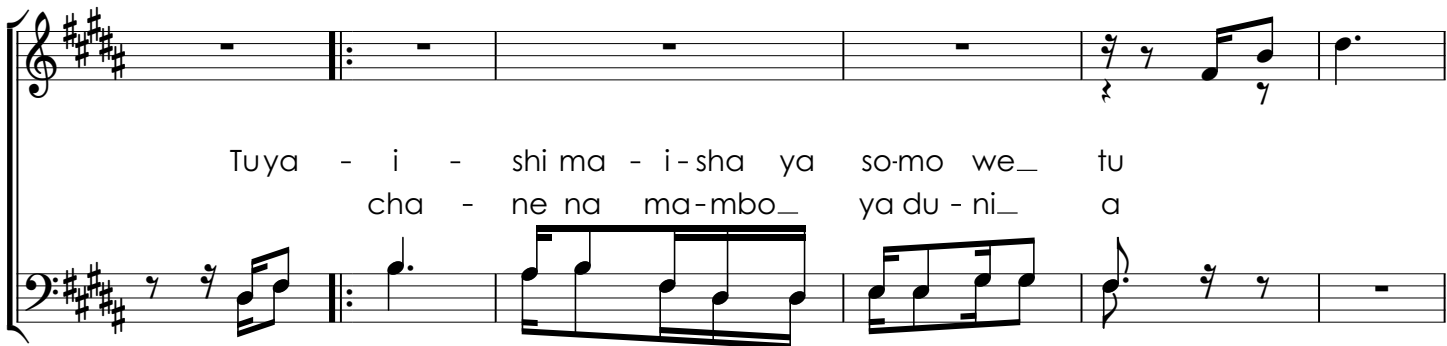


ORGAN

1. tu-we na u - pe - ndo  
 2. ri - e ma-ta - i - fa  
 3. wi-a ma-li ze - tu

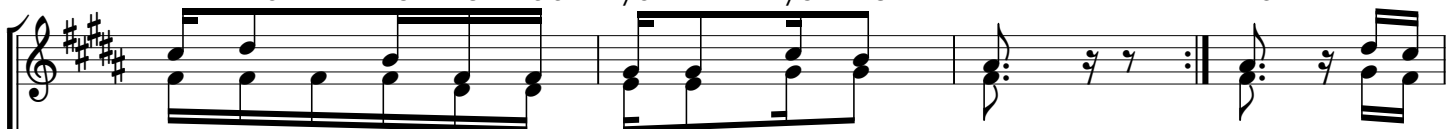
HITIMISHO

kwa ku - te -  
 tu - mu - e -



Tuya - i - shi ma - i - sha ya so - mo we - tu  
 cha - ne na ma - mbo - ya du - ni - a

nda ya - na - yo m - pe - nde - za Mu - ngu  
 nzi kwa ku - te - nda ya - li - yo me ma *crescendo*



kwa ku - te - nda ya - na - yo m - pe - nde - za i - li  
 tu - mu - e - nzi kwa ku - te - nda me - Tu - a ma

*decrescendo*

ku-fi ka hu - ko a - li - ko ju - u mbi - ngu-ni i - li

ku-fi - ka

tu-we - ze ku-fi - ka hu - ko ju - u mbi\_ ngu-ni si - ku mo - ja tu -

wena - ye hu\_ ko mbi-ngu - **1, 2, 3** **4.**

wena - ye mbi\_ ngu\_ ni i - li ni

NB: UNaweza KUPIGIA FUNGUO B AU A