

Mt. Yosefu Mfanyakazi Utuombe

By Philipo D. Mizungwe
Mt. Ritha wa Kashia
Mbagala - Majimatitu DSM
11-4-2026

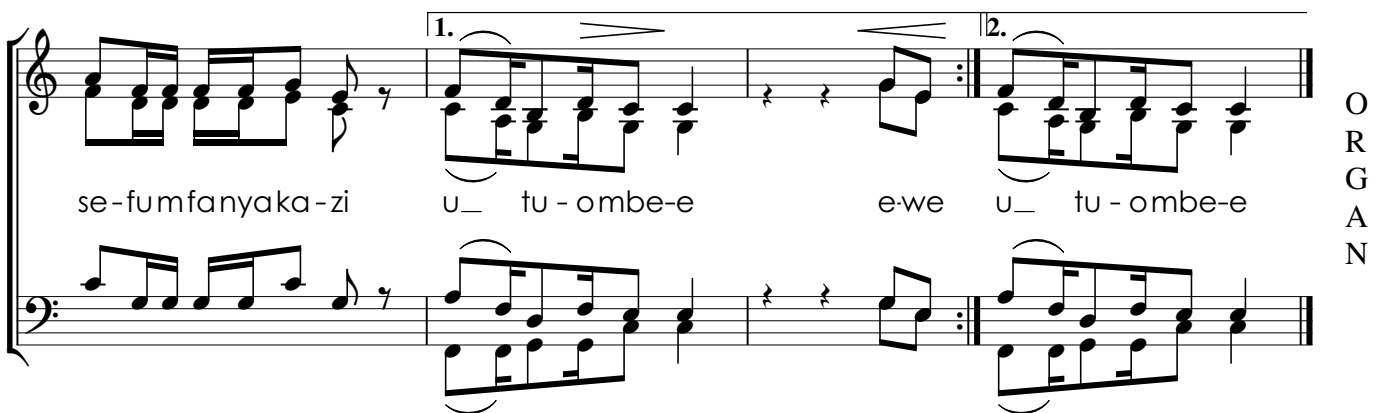
(vyina ubhusambele)



So - mo na m-si-ma-mi-zi wa Ki-ga-ngoche-tu Mta - ka - ti - fu



Yo_ se_ fu Yo - se - fu m-fanyaka - zi u_ tu - ombe - e Yo-
e - we

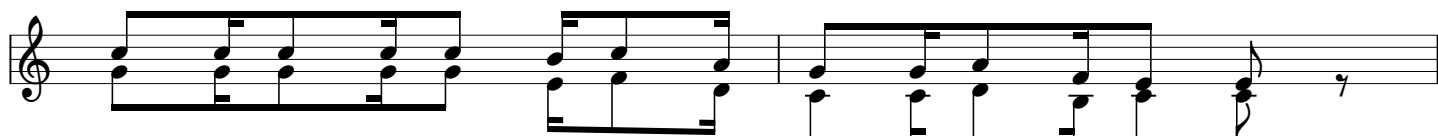


se-fumfanyaka-zi u_ tu - ombe-e e-we u_ tu - ombe-e

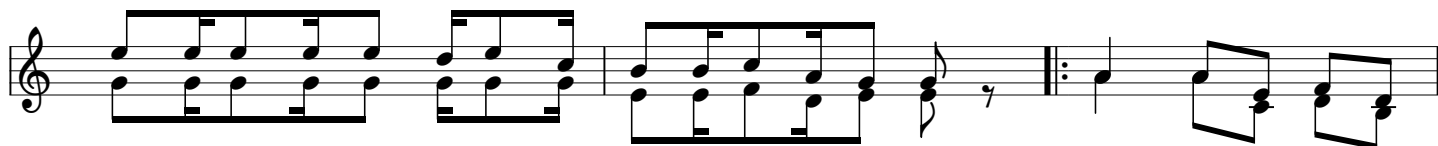
1. 2.

ORGAN

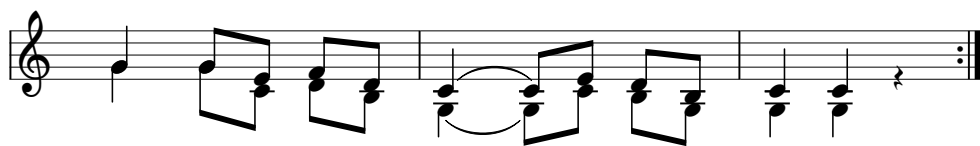
MASHAIRI



1. Zi - o-mbe - e ju - mu - i - ya za Ki - ga - ngo che - tu
 3. Tu - i - ge m - fa - no wa so - mo we - tu Yo - se - fu

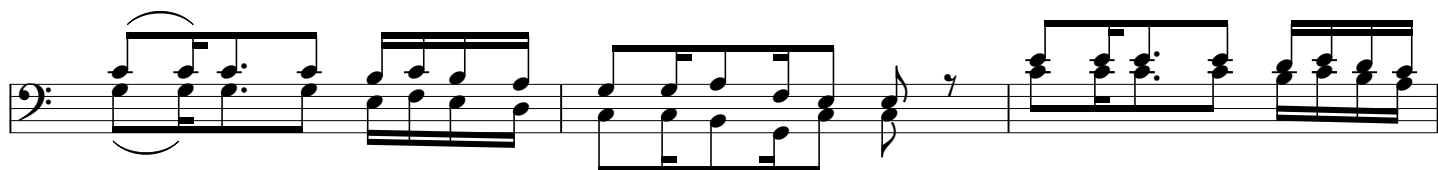


1. tu - ombe - e si - si so - te Tu - we na u - mo - ja ba - ba tu - o - mbe -
 3. a - li - ku - wamwe - nyeha - ki na m - nye - nye - ke - vu na - si tu - we wa -

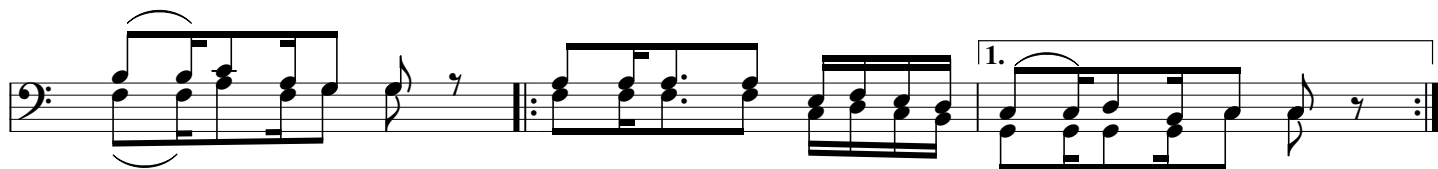


1. e si - si so - te tu_ we na u - pe - ndo
 3. nye - nye - ke - vu na tu_ we wacha Mu - ngu

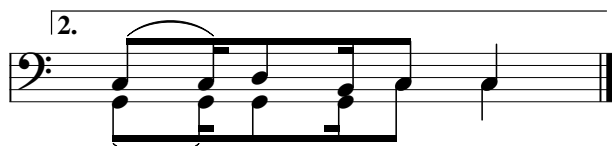
O
R
G
A
N



2. Tu - mu - e - nzi somo we - tu kwa ku - te - nda mema tu - ya - a - che ya - si - yo m -
 4. Yo - se - fu a - li - fa - nya ka - zi kwa bi - di - i a - i - tu - nze fa - mi - li - a



2. pe nde - za Mu - ngu si - kumo - ja tu - we - ze ku - fi_ ka mbingu - ni
 4. ya Na - za - re - ti si - si na - si tu - i - ge m - fa - no wa Yo - se - fu



ORGAN

2. fi_ ka mbingu - ni
 4. fa - no wa Yo - se - fu

NB: UNaweza kuimbwa kwa somo wa parokia kwa kubadili jina la kigango kwa parokia