

MUNGU AMEPAA

D.J.Kimatuka

KACHS

Kwaya ya Mt. Paul Mtume

2023

Copied by E.N. EDWARD

Dominika ya kupaa Bwana

♩ = 80

Musical score for the first system of 'Mungu Amapaa'. It features a grand staff with a treble and bass clef, a key signature of three sharps (F#, C#, G#), and a 6/16 time signature. The tempo is marked as quarter note = 80. The lyrics are: Mu ngu a mepa a kwa ke le le ke le le za sha ngwe - Mu ngu a me paa kwa

Musical score for the second system of 'Mungu Amapaa'. It features a grand staff with a treble and bass clef, a key signature of three sharps (F#, C#, G#), and a 6/16 time signature. The lyrics are: ke le le ke le le za sha ngwe Bwa na kwasa u ti Bwa na kwa sa u ti

Musical score for the third system of 'Mungu Amapaa'. It features a grand staff with a treble and bass clef, a key signature of three sharps (F#, C#, G#), and a 6/16 time signature. The lyrics are: ya ba ra gu mu Bwa na kwasa u ti Bwana sa u ti ya ba ra gu mu ba ra gu mu. The system includes first and second endings.

19



1. E nyi wa - tu pi ge ni ma ko fi m pi gi e ni Mungu ke
 2. Mungu ka paa kwa ke le le za sha ngwe Bwa na kwa - sa u ti -

25



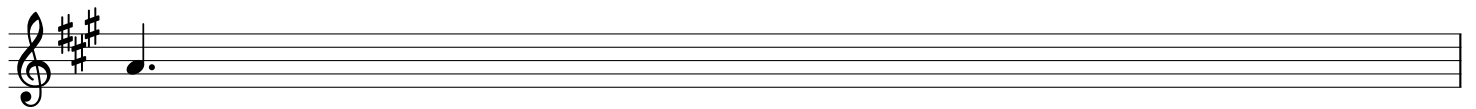
le le kwa sa u ti - ya sha ngwe kwa ku - wa Bwa na a li ye ju u -
 Bwa na sa u ti ya ba ra gu mu mwi mbi e ni Mu ngunaam i mbe ni i mbe

30



ni mwe - nye ku o go fya ndi ye mfalme mku u u ya duni a
 ni naa m mwi - mbi e ni mfa - l me we tu i mbeni naa mi -

36



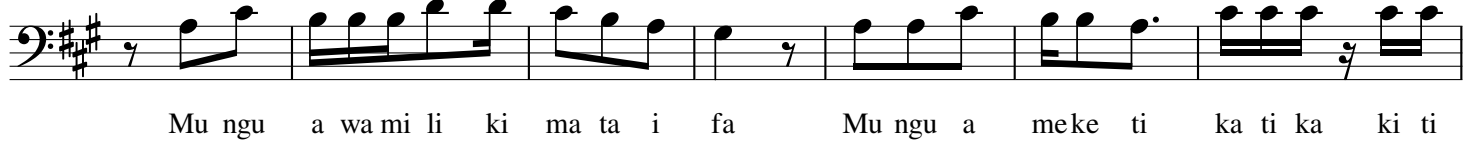
te.
 ni.

37



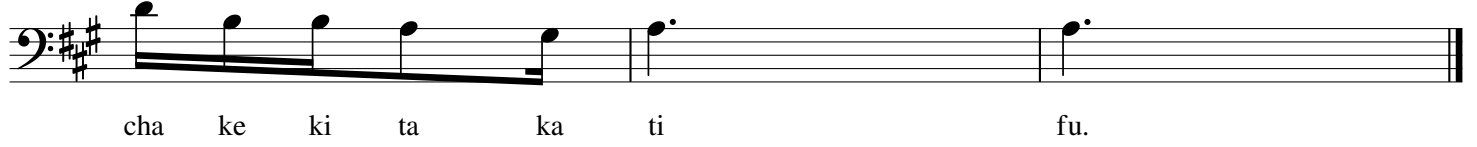
3.Ma a na Mungu ndi ye mfa lme wa du ni a yo te i mbe ni kwa a ki li

43



Mu ngu a wa mi li ki ma ta i fa Mu ngu a meke ti ka ti ka ki ti

50



cha ke ki ta ka ti fu.