

*UTUINULIE NURU YA USO WAKO*  
*Wimbo wa katikati Dom 3 mwaka B*  
*zab;4:1,3,6,8(k)6*

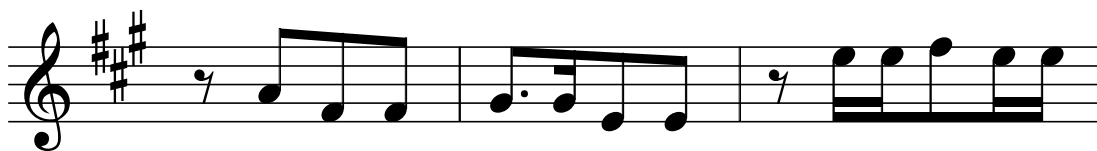
*Na Oswald L Gerelo*  
*Karanga - Moshi*  
*8 april 2024*



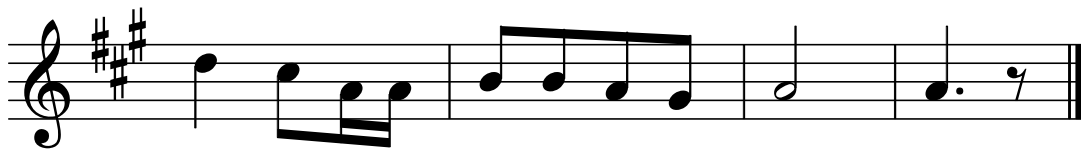
1. Ee Mu ngu wa ha ki ya ngu u ni i ti



ki e ni i ta po u me ni fa ni zi a na fa si

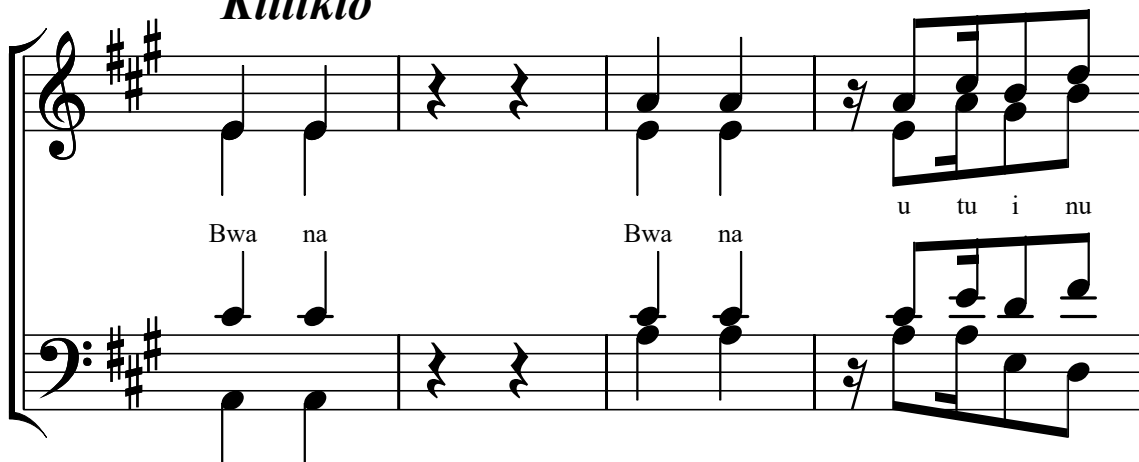


1. wa ka ti wa - shi da u ni fa dhi li



na ku i si ki a sa la ya ngu.

***Kiitikio***



li e nu ru ya u so wa ko.

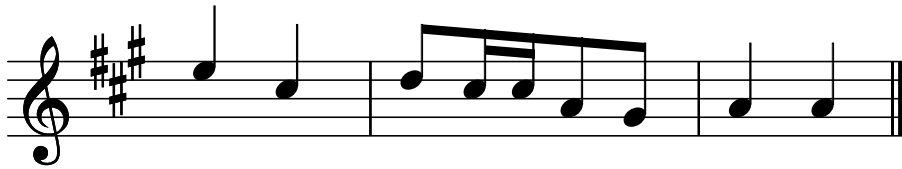
2. Ba li ju e ni ya ku a Bwa na a me ji te

u li a m ta u wa Bwa na a ta si

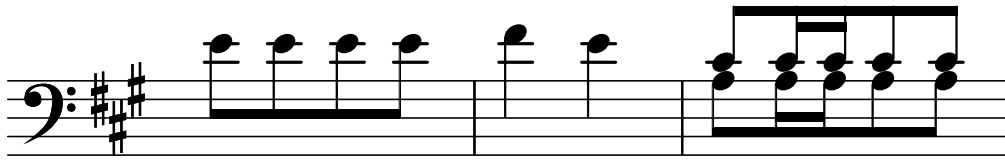
ki a ni mwi ta po.

3. We ngi hu se ma na ni a ta ka ye

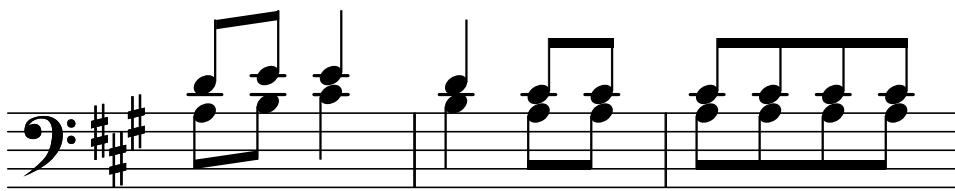
tu o ne sha me ma Bwa na u tu i nu



li e nu ru ya u so wa ko



4. Ka ti ka a ma ni ni ta ji la za



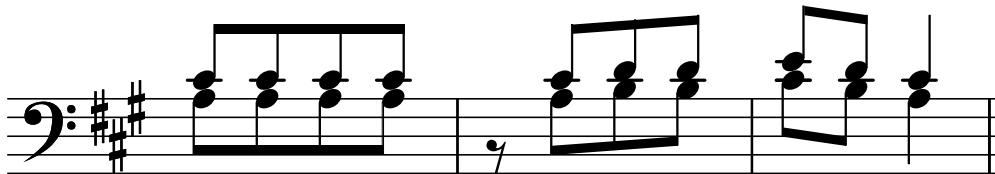
na ku pa ta u si ngi zi ma ra



ma a na we we Bwa na



pe ke ya ko ndi we u ni



ja li a ye ku ka a sa la ma