

KAMA WATOTO WACHANGA
mwanzo dom ya 2 pasaka

Na. Oswald L Gerelo.
Karanga-Moshi
April 1/2024

kwafuraha

Musical notation for the first system, featuring a treble and bass staff in 3/8 time with a key signature of one sharp (F#). The lyrics are: Ka ma wa to to wa cha nga wa li o za li wa sa sa.

Musical notation for the second system, continuing the melody and accompaniment. The lyrics are: ya ta ma ni ni ma zi wa ya a ki li - ya si yo ghu shi.

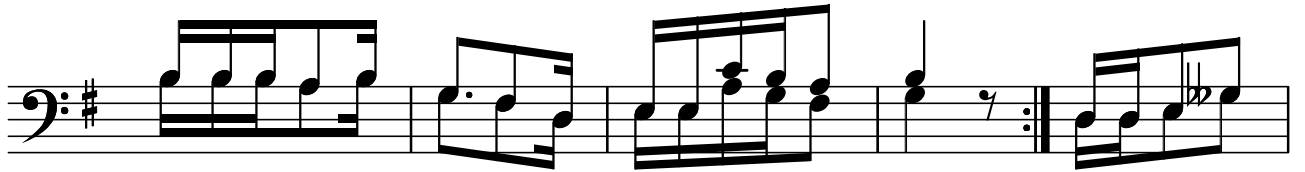
Musical notation for the third system, concluding the piece with the word 'wa'.



I li kwa ha yo m pa te ku u ku li a ku u ku li



a wo ko vu a le lu ya.



2a.Po ke e ni fu ra ha ya u tu ku fu we nu
2b.M ki m shu ku ru Mu ngu a li ye wa i ta kwa u fa



wa ke wa mbi ngu ni a le lu - - ya.