

# KUBALI NDOTO YA MUNGU

Augustino Vedasto

0762-473-599

29-01-2024

♩ = 76

I ku ba li ndo to tu u fa nye u pya u pya u li mwen gu

ya ke Mungu na tu u fa nye

Detailed description: This system contains the first five measures of the piece. It features a piano accompaniment with a steady eighth-note bass line and chords in the right hand. The vocal line consists of a simple melody with lyrics: 'I ku ba li ndo to tu u fa nye u pya u pya u li mwen gu ya ke Mungu na tu u fa nye'.

6

vu nji ka vu nji ka ma te ndo ka bi sa ma ku u

u li o na tu fa nye ya a ja bu tu ten de

Detailed description: This system contains measures 6 through 11. It includes a repeat sign at the beginning of measure 6. The piano accompaniment continues with the same rhythmic pattern. The vocal line lyrics are: 'vu nji ka vu nji ka ma te ndo ka bi sa ma ku u u li o na tu fa nye ya a ja bu tu ten de'.

14

1. Du ni a i na ma u mi vu na pi a i li yo ja a wa si wa si na si si  
2. Ku ba li ndo to ya Mu u mba wa mbi ngu nda ni ye tu si si na tu u

Detailed description: This system contains measures 14 through 21. It features two vocal parts. The piano accompaniment continues. The vocal line lyrics are: '1. Du ni a i na ma u mi vu na pi a i li yo ja a wa si wa si na si si 2. Ku ba li ndo to ya Mu u mba wa mbi ngu nda ni ye tu si si na tu u'.

22

tu o mbe ba ra ka za ke Mwe nye zi Mu ngu  
fa nye u pya u li mwe ngu u li o vu nji ka

Detailed description: This system contains measures 22 through 25. The piano accompaniment continues. The vocal line lyrics are: 'tu o mbe ba ra ka za ke Mwe nye zi Mu ngu fa nye u pya u li mwe ngu u li o vu nji ka'.

2

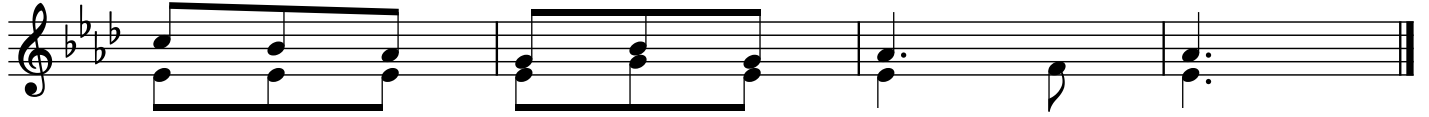
26

MASHAHIRI



1. I ku ba li ni ndo to ya ke\_\_\_\_\_ Mwenye zi a li ye tu u mba so\_\_\_\_\_ te  
 2. Ndo to ya Mu ngu Ba ba kwe li\_\_\_\_\_ ya a ja bu i na tu o ngo za wo\_\_\_\_\_ te  
 3. U li mwengu wa le o u me ha ri bi ka u me vu nji ka vu nji\_\_\_\_\_ ka

34



na tu te nde ka zi ya\_\_\_\_\_ ke  
 ku ge u za u li mwe\_\_\_\_\_ ngu  
 te na we nye ma u mi\_\_\_\_\_ vu