

# AMESHINDA MAUTI

Samson L. Mvumba  
St. Bernadetha-MUCE  
23/02/2024

♩. = 105

Musical score for the first system of 'AMESHINDA MAUTI'. The score is written for piano in G major (one sharp) and 6/16 time. It consists of five measures. The lyrics are: Ni kwe li le o, Ka shi nda le o, Mwo ko zi Ye su, ma u ti Ye su, Kri sto Kri sto, ka fu fu ka, ka fu fu ka. The piano accompaniment features a steady eighth-note pattern in the right hand and a similar pattern in the left hand.

Ni kwe li le o  
Ka shi nda le o

Mwo ko zi Ye su  
ma u ti Ye su

Kri sto Kri sto  
ka fu fu ka  
ka fu fu ka

ka fu fu ka Kri sto

## KIITIKIO

Musical score for the second system of 'AMESHINDA MAUTI'. The score is written for piano in G major (one sharp) and 6/16 time. It consists of six measures. The lyrics are: na tu i mbe, A le lu ya, Tu i mbe na, tu sha ngi li, e Kri, Mwo ko zi, na twi mbe, A le lu ya. The piano accompaniment features a steady eighth-note pattern in the right hand and a similar pattern in the left hand.

na tu i mbe  
A le lu ya

Tu i mbe na  
tu sha ngi li  
e Kri

Mwo ko zi  
na twi mbe  
A le lu ya

Musical score for the third system of 'AMESHINDA MAUTI'. The score is written for piano in G major (one sharp) and 6/16 time. It consists of seven measures. The lyrics are: Kri sto ka fu fu, sto a - me fu fu, ka kwe li, ma u ti a, meshi nda sa, sa ni, m zi ma. The piano accompaniment features a steady eighth-note pattern in the right hand and a similar pattern in the left hand.

Kri sto ka fu fu  
sto a - me fu fu  
ka kwe li  
ma u ti a  
meshi nda sa  
sa ni  
m zi ma

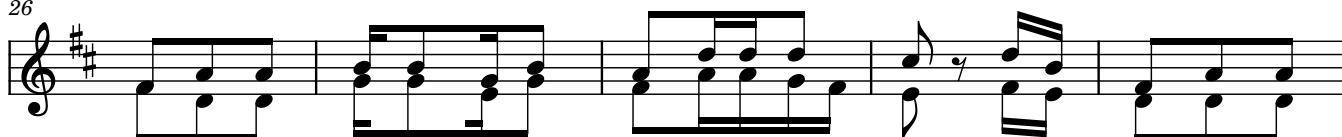
Musical score for the fourth system of 'AMESHINDA MAUTI'. The score is written for piano in G major (one sharp) and 6/16 time. It consists of seven measures. The lyrics are: a su bu, hi na ma pe, ma i, me thi bi ti, ka, tu i mbe na, m zi ma. The piano accompaniment features a steady eighth-note pattern in the right hand and a similar pattern in the left hand.

a su bu  
hi na ma pe  
ma i  
me thi bi ti  
ka

tu i mbe na  
m zi ma.

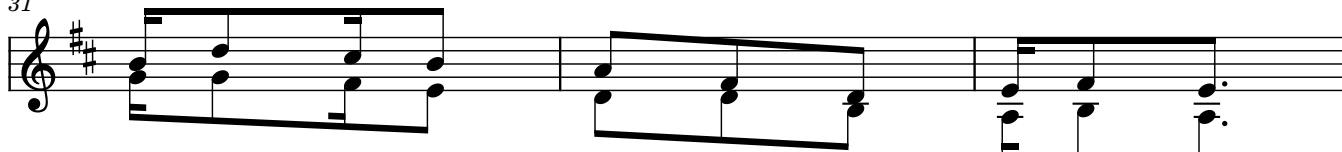
## 2 Mashairi

26



1.Si ku ya kwa nza ya ju ma Ma ri a mu a li kwe nda ka  
2.Na ta za ma Ma la i ka ka si ma ma ka ndo na ye a  
3.Ha ki ka ka tu ko mbo a u tu mwa ni hi vyo tu i mbe

31



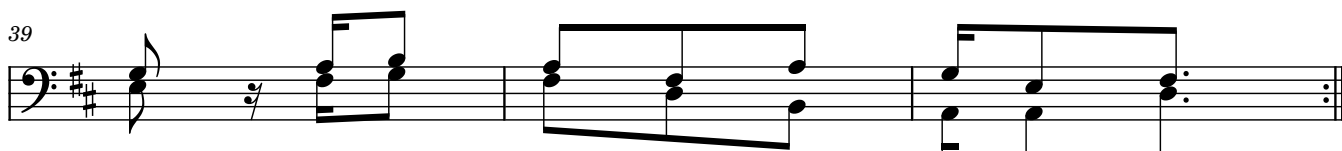
bu ri ni ku nga li gi za ba do,  
ka wa a mbi a li gi za ba do,  
tu msha ngi li e mko mbo zi we tu,

34



a ka li o na li le ji we li ko ka ndo ha ki  
kwa ni ni m na mta fu ta a li ye ha i ha yu  
kwa ki nu bi na ma ta ri tu sha ngi li e Mko mbo

39



ka Bwa na Ye su ka fu fu ka.  
po ha pa Bwa na ka fu fu ka.  
zi we tu Kri sto a me shi nda.

NB: Baada ya kila shairi, usiweke FREE ORGAN, ingia kwenye kiitikio "Tuimbe na tushangilie"