

# AMETUKUKA

BARAKA T. MASHIBE

Mt. Cecilia mfiadini

Udom

Musical score for the first system of 'AMETUKUKA'. It features a grand staff with a treble and bass clef, a key signature of three sharps (F#, C#, G#), and a 6/16 time signature. The melody is written in the treble clef, and the accompaniment is in the bass clef. The lyrics are: Ni m ku u a na i shi ju u a ta ba ki ju u yu po ju u.

Musical score for the second system of 'AMETUKUKA'. It features a grand staff with a treble and bass clef, a key signature of three sharps (F#, C#, G#), and a 6/16 time signature. The melody is written in the treble clef, and the accompaniment is in the bass clef. The lyrics are: a na i shi ju u ju u u vyo te A me tu ku ka mu ngu a me u ya wo te.

a me tu ku ka

11

tu ku ka sa na a me tu ku ka mu ngu a me tu ku ka sa

16

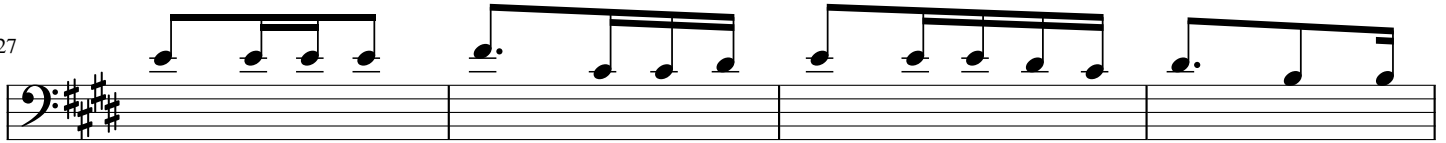
na na yu po ju u a na i shi ju u mi le le mi le

22

le

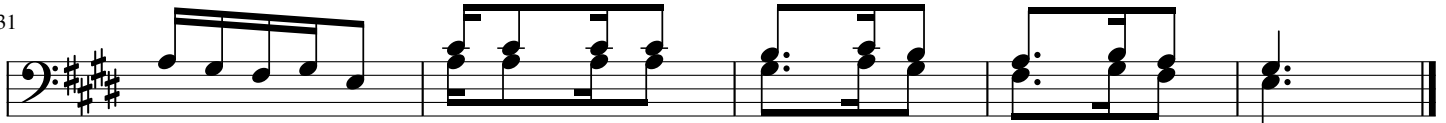
- 1.A me i we ka mbi ngu hu ko ju u sa na na  
 2.A me we ka fu ra ha na hu zu ni i li ma  
 3.A na tu sa me he ma ko sa ye tu ki la tu

27



ye ye yu ju u ya mbi ngu a li yo i u mba na  
 i sha ya we na mi za ni i li yo sa wa  
 na po m ko se a kwa ma dha i fu ye tu

31



ndi o ma a na a me tu ku ka mi le le mi le le