

ASANTE YESU WANGU

(Wimbo wa Shukrani baada ya Ekaristi Takatifu)

Mtunzi: Derick Nducha
Nov.2022

Soprano +Alto

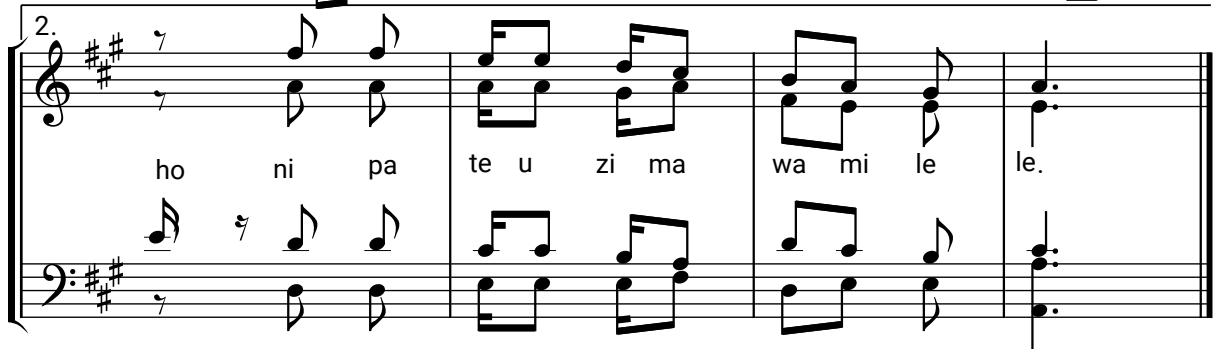
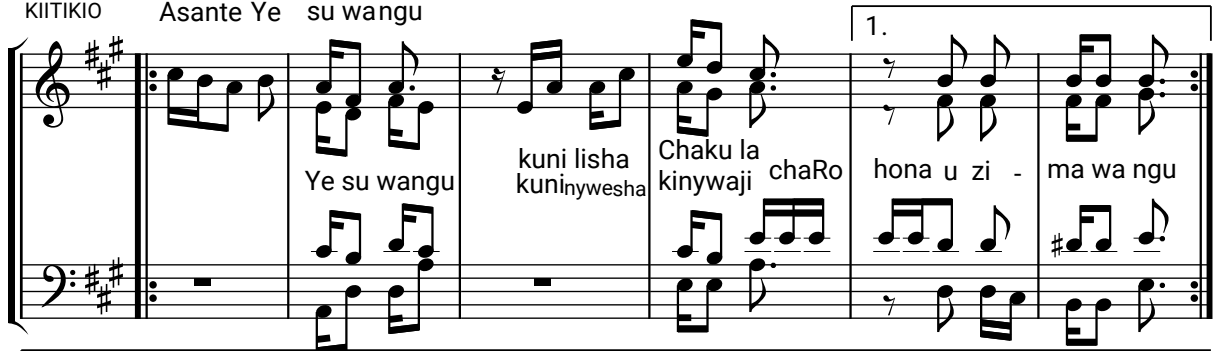


01. Ye su a li to a mwiliwake ka to a da muye msalaba ni i -
(pale)
02. A me ji fanyaku wachakula Maumboma taka tifu yajekwetu i -
(nayo)



li tu - le (pi a) tu - nywe i li si si tu pa te ku shi ba.
li tu - le (pi a) tu - nywe i li tu ka pa te ku o ko ka.

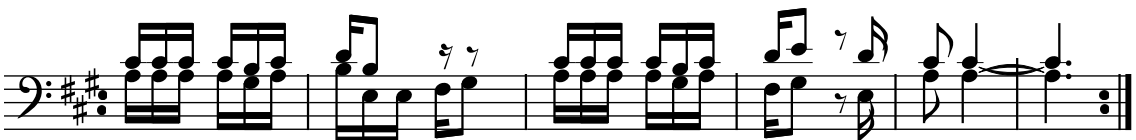
KIITIKIO Asante Ye su wangu



Tenor + Bass



03. U - pendo wa ke Munguha u pi mi ki ka mwe (FREE ORGAN)



ninaku lanaku shibana ni na Afyaya mwilina Roho A sa nte.

+KIITIKIO

HITIMISHO

D O Nducha

A sante BwanaYesua sante kwa wema wako a sante Ye

- su, a sante BwanaYesua sante kwa wema wako a sante Ye

SOLO

A sa nte a sa nteBwa na - Ye suKri sto a

- su, a sante BwanaYesua sa nte kwa wema wako a sa nteYe

D O Nducha

sa nte, u me ji fa nya chaku la - i li u tu o

- su, a sante BwanaYesu a sa nte kwa wema wako a santeYe

This system contains the first six measures of the song. It features a vocal line with lyrics, a piano accompaniment in the right hand, and a bass line in the left hand. The key signature has two sharps (F# and C#), and the time signature is 7/8.

ko e, na Da mu yako ki nywaji - ki tu sa fi sha cho

- su, a sante BwanaYesua sa nte kwa wema wako a sante Bwa

This system contains the next six measures of the song, continuing the vocal line and piano accompaniment from the first system.

Mo yo

naYe su

This system contains the final two measures of the song, ending with a fermata over the final note.

F
I
N
E