

# ENYI MUMTAFUTAO BWANA

Waziri J,  
Mpwapwa,  
08.7.2013

E nyi mu m ta fu ta o Bwa na Bwa na e nyi mu m

Bwa na

Detailed description: This system contains the first five measures of the piece. The music is in 3/4 time with a key signature of one sharp (F#). The melody is written in the treble clef, and the accompaniment is in the bass clef. The lyrics are: 'E nyi mu m ta fu ta o Bwa na Bwa na e nyi mu m'. The word 'Bwa na' appears again below the second measure of the second system.

ta fu ta o Bwa - na na Mi o yo ye nu

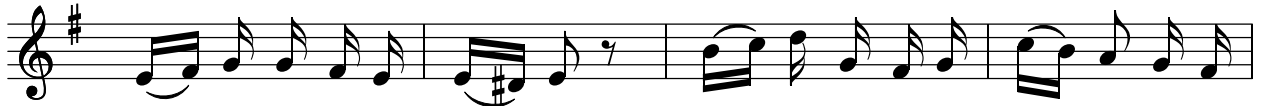
Detailed description: This system contains measures 6 through 10. It features a first ending (1.) and a second ending (2.). The lyrics are: 'ta fu ta o Bwa - na na Mi o yo ye nu'. The word 'Bwa -' is written with a hyphen and a long note value, indicating a sustained sound.

mi o yo ye nu mi o yo ye - nu i - hu i shwe shwe

Detailed description: This system contains the final measures of the piece, from measure 11 to 15. It also includes first and second endings. The lyrics are: 'mi o yo ye nu mi o yo ye - nu i - hu i shwe shwe'. The word 'ye - nu' is written with a hyphen and a long note value.



1. Na mi ma o mbi ya - ngu - na ku o mba we we,  
Bwa na wa ka ti u ku pe nde za - o e Mu ngu.



kwa- wi ngi wa fa dhi - li, kwa- wi ngi wa fa dhi- li za ko



u - - - ni ji bu.



2. Ka - ti - ka - kwe - li - - - ya wo ko - vu - wa ko,  
Ee Bwa na u ni ji bu ma a na fa dhi li za ko ni nje ma kwa ngu.



kwa a ji li ya re he - ma, kwa a ji li ya re he - ma za ko



u ni e le ke e.



3. Na mi ni li ye, ma si ki ni na m tu wa a ma - ni,



Mu ngu wo ko vu wa ngu u ta ni i - nu a.



4.Ni ta li si fu ji - na la Mu- ngu kwa- wi - mbo



na - mi ni ta m tu ku za kwa shu - kra ni.