

ASANTE TENA

Par: IRA. M. Jules
Date: 31.07.023
Kambi Nyaruguru
Kwaza ya Mt.
Anna Maria

Musical notation on a staff with a treble clef, key signature of one flat, and a 2/4 time signature. The melody begins with a quarter rest followed by a series of eighth and quarter notes.

Ee mungu wangu acha niku shukuru kwamema

Musical notation on a staff with a treble clef, continuing the melody from the previous system.

Ulio nite nde a mimi mionimwana e te-na

Musical notation on a staff with a treble clef, continuing the melody.

naomba uriru huu nifumbue kimywa changu (ni se me) mi

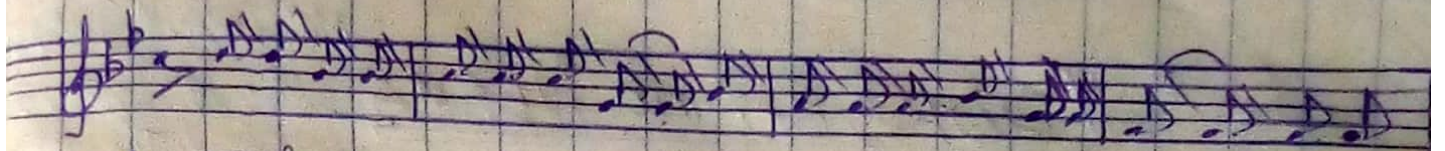
Musical notation on a staff with a treble clef, continuing the melody.

se me a sante kwa kuni umba we wa a sante te na

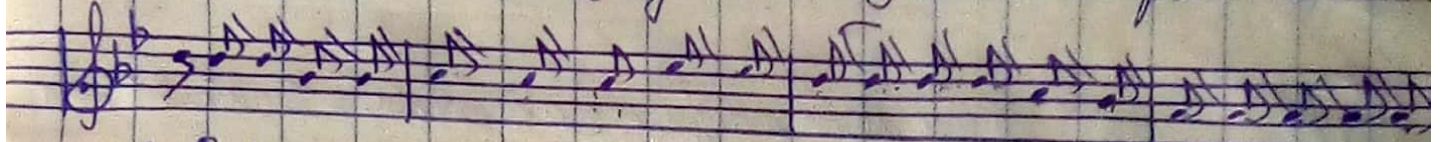
Musical notation on a staff with a treble clef, continuing the melody. The right side of the staff is heavily scribbled over with dark ink.

we te-na we - a sante te ma

Musical notation on a staff with a treble clef, continuing the melody. The word 'organ' is written in the right margin. The piece ends with a double bar line and the word 'FINE' written above the staff.



1. Sikujiwa yakuwa leo hi i mitafikani kiwa hai
2. Ee Mungu wangu sioni mini nawe zakuku rudi shi a
3. Pakea sa uti yangu - i nayoku imbia po - kea



1. Lakini kwawema wako u kanigali a ku iona siku
2. Kutokama nayo te uli oni tendea wakati washida
3. familia yanguma shukrani - zangu zito kazondaniya



1. hii ya leo, na fu- raha i kaja a moyo ni
2. hat a wakati, wa ra- ha oh! Bwana a cha- ni
3. moyo ni mwangu po kea tena nakazi za mikono



1. mwangu - a sante te na
2. seme - a sante te na
3. yangu uzi thi bi ti she.

Copied by: JIRAM