

# BWANA YESU

Yn. 13:3

JOHN MGANDU

March - 1998

DSM

Moderato

Musical score for the first system of 'Bwana Yesu'. It features a grand staff with treble and bass clefs, a key signature of one sharp (F#), and a 3/4 time signature. The tempo is marked 'Moderato'. The music is in a homophonic style with a steady accompaniment. Dynamics include accents (>) and mezzo-forte (mf). The lyrics are: Bwa na Ye su a li pokwisha ku la pa mo ja na wafu a si wa ke.

Musical score for the second system of 'Bwana Yesu'. It continues the grand staff notation. Dynamics include forte (f) and mezzo-forte (mf). The lyrics are: A li wa o sha mi guu ya o a li wa o sha mi guu.

Musical score for the third system of 'Bwana Yesu'. It continues the grand staff notation. The lyrics are: ya o.

Yn. 13: 12 - 13, 14, 15

Musical score for the fourth system of 'Bwana Yesu'. It features a single bass clef staff. The lyrics are: 1.Je, m me e le wa na ha yo ni li yo wa te nde a? Ni nyi mwani

1.Je, m me e le wa na ha yo ni li yo wa te nde a? Ni nyi mwani

20



i ta, Mwa li mu na Bwa na na nyimwa ne na ve ma ma

25



a na ndi vyo ni li vyo.

27



2.Ba si i ki wa mi mi, ni li ye Bwa na na Mwa li mu,

31



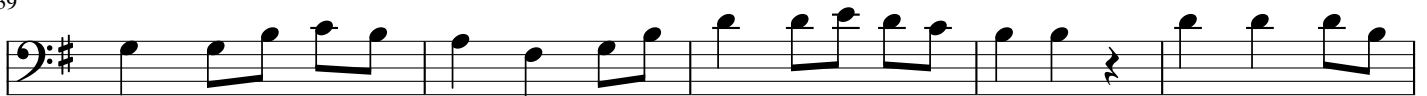
ni me wa ta wa dha mi guu, i me wa pa sa vivyo ku ta wa dha na mi

36



guu ni nyi kwa ni nyi.

39



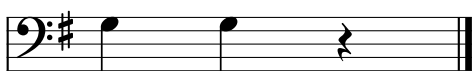
3.Kwa ku wa ni me wa pa, ni me wa pa ki e le le zo i li ka ma

44



mi mi ni li vyowa te nde a na nyi m te nde, m te nde

50



vi vyo.