

MIISHO YOTE YA DUNIA

By Alphonse Kahimba
0752954000
Makete - PARISH
Harm by PAVEKO
0757252473-Songea

Kwauchangamfu

1. 2.

Mi i sho yo te ya Du ni a i me u o na na wo ko

a

Detailed description: This is the first system of a musical score for 'MIISHO YOTE YA DUNIA'. It consists of two staves: a treble clef staff and a bass clef staff. The key signature is one sharp (F#) and the time signature is 6/16. The music is in a homophonic style with a steady accompaniment. The lyrics are written below the treble staff. The system ends with a double bar line and two first/second endings.

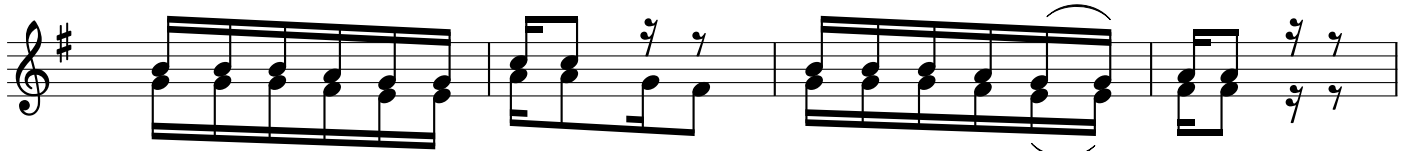
vu wa Mu ngu wo ko vu wa Mu ngu wo ko vu wa Mu ngu wa

Detailed description: This is the second system of the musical score. It continues the melody and accompaniment from the first system. The lyrics are 'vu wa Mu ngu wo ko vu wa Mu ngu wo ko vu wa Mu ngu wa'. The system ends with a double bar line.

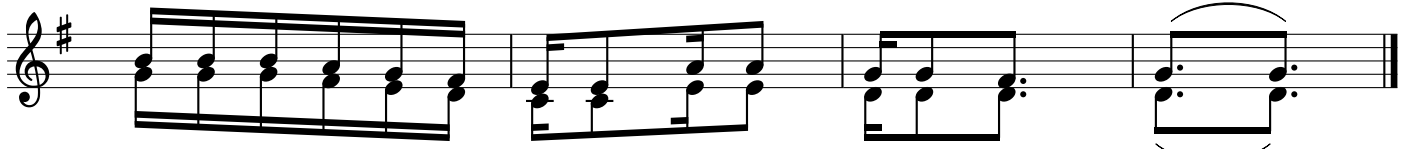
1. 2.

Mu ngu wa tu wo ko tu

Detailed description: This is the third and final system of the musical score. It continues the melody and accompaniment. The lyrics are 'Mu ngu wa tu wo ko tu'. The system ends with a double bar line and two first/second endings.



1 . Mwimbi e ni Bwa na wi mbo m pya mwi mbi e ni wi mbo m pya
2 . Mko no wa ke wa ku u me wa ke mko no wa ke mwe - nye we



kwa ma a na a me te da ma mbo ya a ja bu
mko no wa ke Mta ka ti fu u me te nda wo ko vu