

TUNAKUTOLEA SADAKA

Ngoni Melody

Na, Dietrich Nyoni
23/june/2016 Mkongo
Long variation

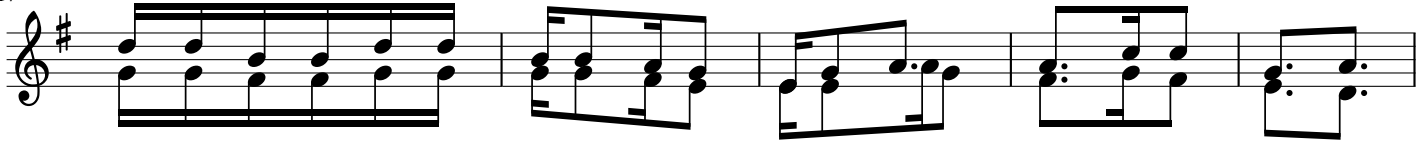
$\text{♩} = 72$

Musical notation for the first system, measures 1-6. The score is in G major and 6/16 time. The melody is written in the treble clef, and the accompaniment is in the bass clef. The lyrics are: Tuna ku to le a sa da ka ye tu ya le o tu na ku o mba Bwa na

Musical notation for the second system, measures 7-12. The score is in G major and 6/16 time. The melody is written in the treble clef, and the accompaniment is in the bass clef. The lyrics are: Mu ngupo ke a twaku o mba Ee Mungu sa da ka ye tu ya le o

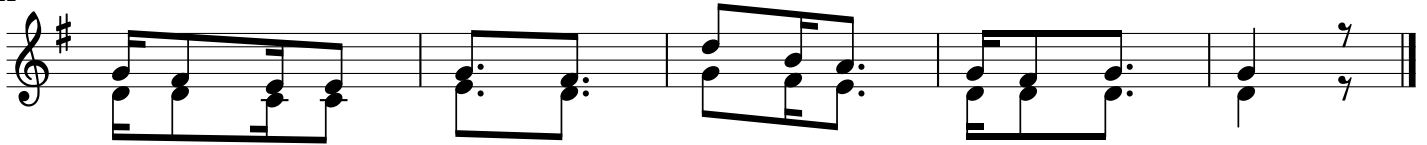
Musical notation for the third system, measures 13-16. The score is in G major and 6/16 time. The melody is written in the treble clef, and the accompaniment is in the bass clef. The lyrics are: i ku pe nde ze Ee Mungu we tu

17



1. Tu na ku to le a sa da ka ye tu ya le o u po ke e
 2. M ka te di va i tu na le ta u po ke e ni sa da ka
 3. Ma za o twa le ta twa ku o mba u po ke e twa shu ku ru
 4. Fa mi li a ze tu twa ku o mba u zi li nde u tu li nde
 5. Twa i mba kwa sha ngwe ku ku si fu Ee— Mu ngu kwa vi fi jo
 6. Kwa u pe ndo wa ko twa ku o mba Ee— Mu ngu u tu we ke

22



Bwa na twa ku o mba Bwa na Mu ngu po ke a
 ya mwa na o mpe nzi i ku pe nde ze mu ngu
 Bwa na kwa u pe ndo Bwa na Mu ngu po ke a
 Bwa na kwa ba ra ka ya ku to ka mbi ngu ni
 na vi ge le ge le ku ku si fu Ee Mu ngu
 ku wa ha— zi na tu we wa ko mi le le