

# MOYO ULIOPONDEKA

(Matoleo / Nadhiri / Shukrani)

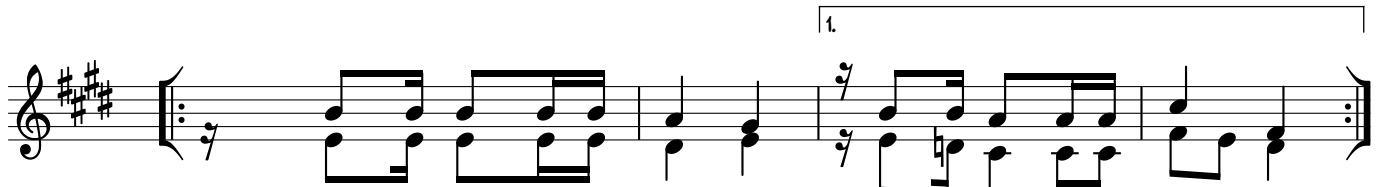
By Dietrick Z. Nyoni  
0764795571  
KILIMANJARO  
Jun . 2016

*Adante*

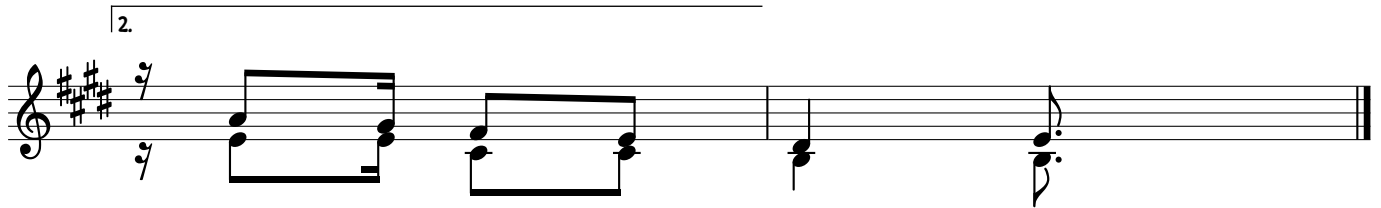
Musical score for the first system, featuring a piano accompaniment and vocal line. The key signature is three sharps (F#, C#, G#) and the time signature is 2/4. The tempo is marked *Adante*. The lyrics are: Sa da ka ya ngu kwa ko ni mo yo mo yo u li o po

Musical score for the second system, featuring a piano accompaniment and vocal line. The key signature is three sharps (F#, C#, G#) and the time signature is 2/4. The tempo is marked *Adante*. The lyrics are: nde ka Sa nde ka mo yo u li o po nde ka Ee Mu ngu hu ta u dha

Musical score for the third system, featuring a piano accompaniment and vocal line. The key signature is three sharps (F#, C#, G#) and the time signature is 2/4. The tempo is marked *Adante*. The lyrics are: ra u Sa da ka ya ngu kwa ko ni mo yo mo yo u li o po nde ka mo nde ka



- 1 . A) Mo yo wa ngu m gu mu m gu mu ka ma ji we  
 B) U ta ni pe - le ka .
- 2 . A) Ha ta ni ki - to a ma pe sa na dha ha bu  
 B) Mo yo wa ngu m gu mu .
- 3 . A) M ti mi zi e Mu ngu na dhi ri na dha bi hu  
 B) Dha bi hu za shu kra ni .
- 4 . A) Mo yo we nye fu ku to mi nyo ro ro ya dha mbi  
 B) Ni fu ngu e Ee Mu ngu .



ha ta je ha na mu  
 ha vi fa i ki tu  
 mbe le ya ke Mu ngu  
 ni je ku ku si fu