

# MPUMBAVU

Mithali 10:1, 23, 12:13, 18:1(K)

Furaha Mbughi

Tukuyu - Mbeya

21-10-2021

♩ = 78

A ji te nga ye nawe nza ke hu ta fu ta ma takwya ke mwe nye we hushi

nda nana ki lasha u ri je ma hushi nda na nasha u ri je ma; A ji je ma; Mpu

mba vu hape m pumba vu, nde zwi ha pe ha pende zwi nde zwi na u fa ha mu, mpu mba vu hape

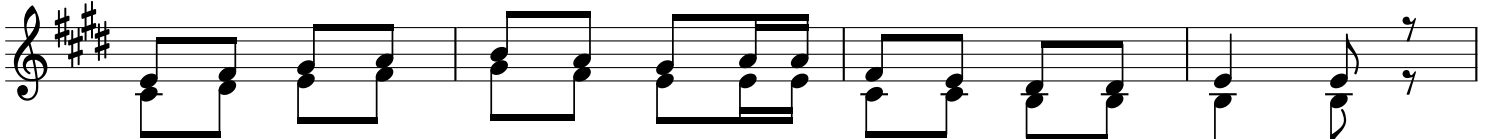
nde zwi ha pe nde zwi na u fa ha mu; M pu ha mu.

20



1.Mwa na mwe nye he ki ma, hu m fu ra hi sha ba ba ye,

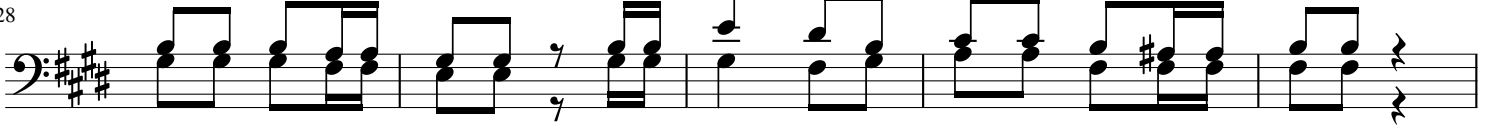
24



ba li mwa na mpu mba vu ni m zi go wa ma ma ye.

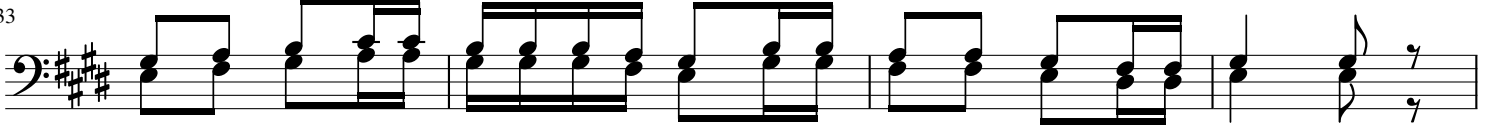
2.Nji a ya m pu mba vu, i me nyo ka ma cho ni pa kemwe nye we,

28

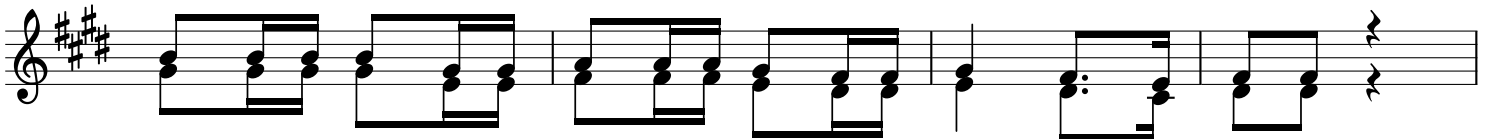


ba li ye ye a li ye na he ki ma hu si ki li za sha u ri.

33

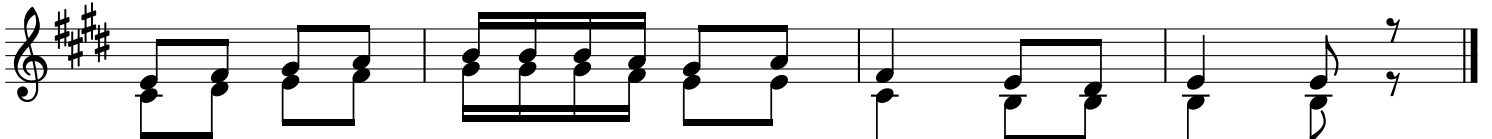


37



3.Kwa m pu mba vu ku te nda ma o vu ni ka ma m che zo,

41



ba li m tu mwenye ma a ri fa a na he ki ma.