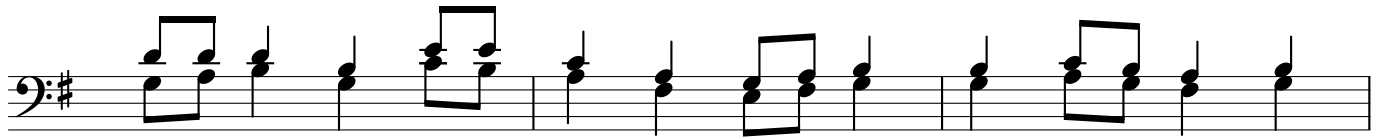


# EWEROHO

By Onesmo Budodi

Musical score for the first system of the song "Ewe Roho". It consists of two staves: a treble clef staff and a bass clef staff. The key signature is one sharp (F#) and the time signature is 4/4. The melody is written in the treble staff, and the accompaniment is in the bass staff. The lyrics are: "E we Ro ho Mta ka ti fu tu shu ki e na ma".

Musical score for the second system of the song "Ewe Roho". It consists of two staves: a treble clef staff and a bass clef staff. The key signature is one sharp (F#) and the time signature is 4/4. The melody is written in the treble staff, and the accompaniment is in the bass staff. The lyrics are: "pa ji ya ko pa ji ya ko". The system includes first and second endings, indicated by "1." and "2." above the staff.



1. E we Ro ho tu ja li e tu m pe nde Mu ngu we tu
2. E we Ro ho tu pe mwa nga tu m ju e Mu ngu we tu
3. E we Ro ho tu we ze she ku ya te nda ya lo me ma
4. E we Ro ho tu we ze she ku ya shi ka ma fu ndi sho
5. E we Ro ho tu pe ngu vu ya ku shi nda vi sha wi shi
6. E we Ro ho tu o ngo ze ku u fa nya u tu mi shi
7. E we Ro ho tu pa ti e ho fu ya ku te nda dha mbi

He - ki ma Ro ho tu shu shi e  
A - ki li  
sha - u ri  
Na - ngu vu  
E - li mu  
I - Ba da  
U - cha ji

He ki ma  
A ki li  
Sha u ri  
Na ngu vu  
E li mu  
I ba da  
U cha ji