

ENENDENI ULIMWENGUNI MWOTE

Wimbo wa katikati: Dominika ya 21, Mwaka C

Zab 117, (K)Marko 16:15

GIVEN JUSTINE M.

26/07/2022

DODOMA

Moderato

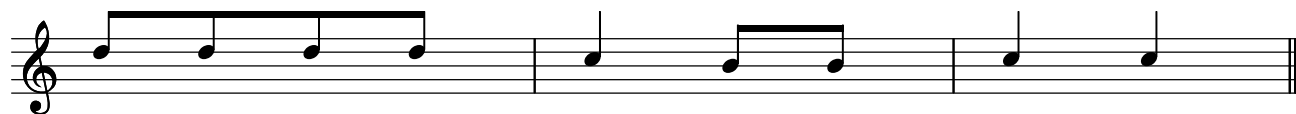
Musical score for the first system of the hymn. It consists of two staves: a treble clef staff and a bass clef staff. The time signature is 2/4. The melody is written in the treble clef, and the accompaniment is in the bass clef. The lyrics are: E ne - nde ni e ne - nde ni u li mwe ngu ni mwo.

Musical score for the second system of the hymn. It consists of two staves: a treble clef staff and a bass clef staff. The time signature is 2/4. The melody is written in the treble clef, and the accompaniment is in the bass clef. The lyrics are: te te m ka i hu bi ri i nji li m ka i hu bi ri. The system includes first and second endings, indicated by '1.' and '2.' above the first two measures.

Musical score for the third system of the hymn. It consists of two staves: a treble clef staff and a bass clef staff. The time signature is 2/4. The melody is written in the treble clef, and the accompaniment is in the bass clef. The lyrics are: i nji li.



1.E nyi ma ta i fa yo te m si fu ni - Bwa na e nyi wa -
2.Ma a na fa dhi li za ke kwe tu si si ni ku u na u a mi
3.E ne nde ni du ni a ni m ka i hu - bi ri i nji li -



tu - wo te m hi mi di ni
ni fu wa ke ni wa mi le le
ya - Bwa na A le - lu ya

...