



SHIKANIRIYA KUREMYE

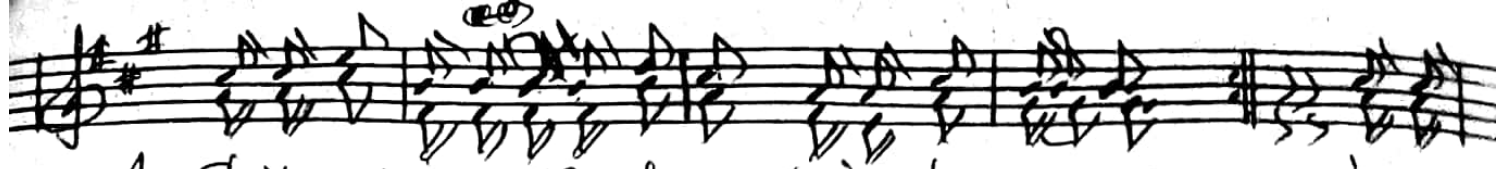
By: IRAM. Jide
Date: 23-06-2024
Unit 6 class (G11/01)
Nyirugulu camp
Tanzania - Kigoma.

Tugende gushi, ka ni r'Ima na - - kuka ni yoya ture nye
gushi, ka ni r'Ima na - - kandi - -

- tugende ni yo ikwiyegu shikani rwa - "Ina organ wazi"

dukwiye gushikani Aa Imama ya lu shima Iyo Ma
n'umuti ma mwi-za - kandi

na izo heza yaku r'amashikanwaya - lu -



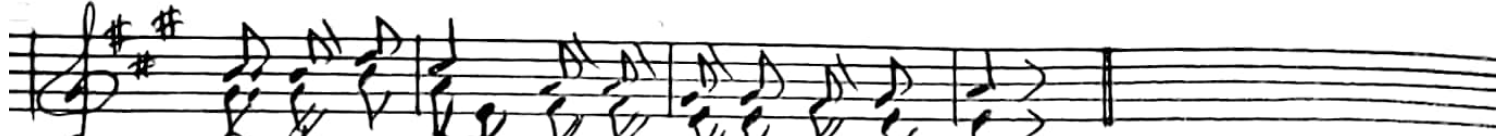
1. Shikani raiyshi kanwaniya ku remye iyo
u yi shi kanirebiku ye kumuti (m'utanga ma mwi'za)



1. Mana izo heza yaki r'iryoshikanwa.



2. Iryo du fise ryo - se twabaha wen'I mana n'imu



2. Se tu ge nde gushi kandi Imana.

"Imana ishi ~ we!"

Copied by: IRA. M. Juba.