

# MFANYIENI BWANA SHANGWE

By. John Mlabu  
KCN

M fa nyi e ni Bwanashangwe du - ni a yo te yo te m tu mi ki e ni mtu mi ki e ni m tu mi ki e ni

1. 2.

Detailed description: This system contains the first two lines of the musical score. It features a grand staff with a treble and bass clef, a key signature of two sharps (F# and C#), and a 3/8 time signature. The melody is written in the treble clef, and the accompaniment is in the bass clef. The lyrics are written below the notes. The first line ends with a double bar line and repeat signs. The second line begins with a first ending bracket labeled '1.' and a second ending bracket labeled '2.'. The lyrics 'mi ki e ni' are written above the notes in the second line, and 'mtu mi ki e ni' and 'm tu mi ki e ni' are written below the notes in the second line.

Bwa na kwa - fu - ra ha njo - ni mbe le za - ke kwa - ku i mba m tu nashangwe njo ni mbele

1.

Detailed description: This system contains the third and fourth lines of the musical score. It continues the grand staff notation from the first system. The lyrics 'Bwa na kwa - fu - ra ha njo - ni mbe le za - ke kwa - ku i mba m tu' are written below the notes in the third line, and 'nashangwe njo ni mbele' is written below the notes in the fourth line. The system ends with a first ending bracket labeled '1.' and a double bar line with repeat signs.

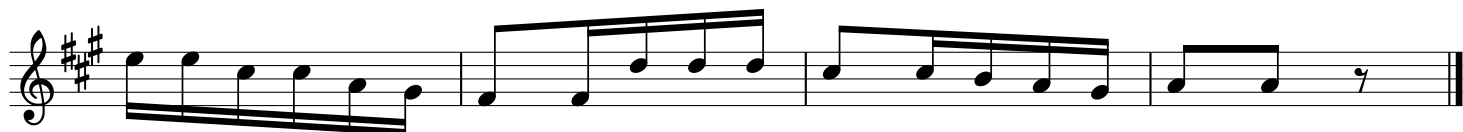
i mba

2.

Detailed description: This system contains the fifth line of the musical score. It continues the grand staff notation. The lyrics 'i mba' are written below the notes in the fifth line. The system ends with a second ending bracket labeled '2.' and a double bar line with repeat signs.



1. Ju enikwamba Bwa na ndi - ye - Mu ngu ndi ye a li ye tu u - mbana si si tu wa tu wa ke  
2. Kwkuwabwana ndi ye ndi - ye - mwema na re he ma za ke ni - - - za - - mi - le le



1. tu - - - wa tu wa ke na ko ndo o wa ma li sho ya ke  
2. na u a mi ni fu wa ke - vi - za - zi na vi za zi