

ALELUYA, MTU AKINIPENDA

Shangilio Dom. 7, A.

C. Saasita

Revised on 25 Feb, 2014 Dsm

♩ = 104

A le lu ya, a le lu ya, a le
A le lu ya, a le lu ya, a le
A le lu ya, a le lu ya, a le
A le lu ya, a le lu ya, a le

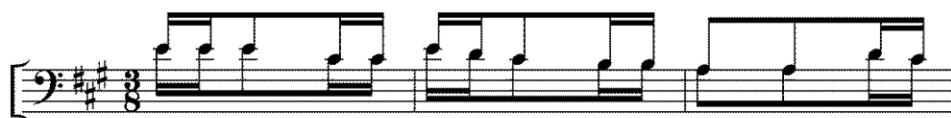
lu ya, a le lu ya, a le lu ya, a le
lu ya, a le lu ya, a le lu ya, a le
lu ya, a le lu ya, a le lu ya, a le
lu ya, a le lu ya, a le lu ya, a le

lu ya, a le lu ya, a le lu ya.
a le lu ya, a le lu ya.
lu ya, a le lu ya, a le lu ya.
a le lu ya, a le lu ya.

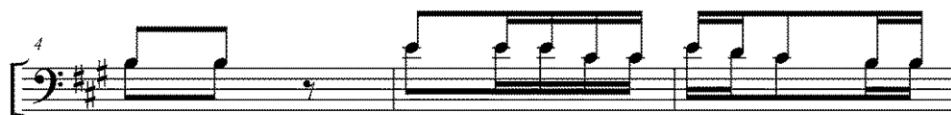
a le lu ya, a le lu ya, a le lu ya.

Detailed description: The image shows a musical score for a hymn. It consists of three systems of music. Each system has a vocal line (treble clef) and a piano accompaniment line (bass clef). The key signature is two sharps (F# and C#), and the time signature is 3/8. The tempo is marked as quarter note = 104. The lyrics are 'ALELUYA, MTU AKINIPENDA'. The first system starts with a 7-measure rest in the vocal line. The second system starts with a 4-measure rest. The third system starts with a 7-measure rest. The score ends with a double bar line and repeat dots.

Aleluya, mtu akinipenda - C. Saasita



M tu a ki ni pe nda a ta li shi ka ne no



la ngu, na ba ba ya ngu a ta m pe nda



na si tu ta ku ja kwa ke; a le lu ya,



a le lu ya.