

KILA MTU

By Paschal VK (PAVEKO)

0719196248--0752863684

B/Samora --SONGEA

$\text{♩} = 75$

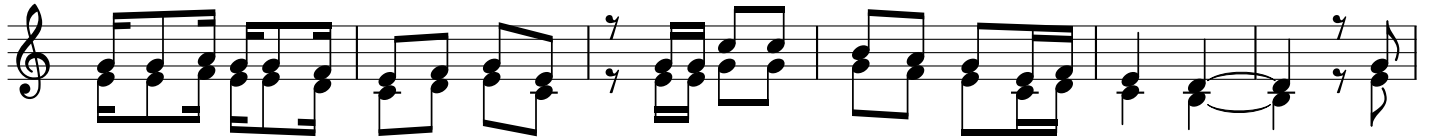
Musical notation for the first system of the song. It consists of a grand staff with a treble clef on the upper staff and a bass clef on the lower staff. The time signature is 2/4. The melody is written in the treble clef, and the accompaniment is in the bass clef. The lyrics are: Ki la m tu a ta u chuku a m sa la ba wa ke ma be ga na ma a na ya ke

Musical notation for the second system of the song. It consists of a grand staff with a treble clef on the upper staff and a bass clef on the lower staff. The time signature is 2/4. The melody is written in the treble clef, and the accompaniment is in the bass clef. The lyrics are: ya ta muhu ku mu mate ndoya ke si ki li za kwama ki ni ma te ndo

Musical notation for the third system of the song. It consists of a grand staff with a treble clef on the upper staff and a bass clef on the lower staff. The time signature is 2/4. The melody is written in the treble clef, and the accompaniment is in the bass clef. The lyrics are: u na yo ya te nda du ni a ni ndu gu ya ngu ha yo ndi yo ya ta ku hu ku mu si

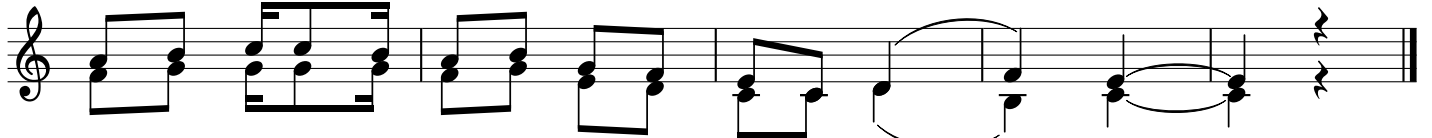
Musical notation for the fourth system of the song. It consists of a grand staff with a treble clef on the upper staff and a bass clef on the lower staff. The time signature is 2/4. The melody is written in the treble clef, and the accompaniment is in the bass clef. The lyrics are: ku ya mwi sho

20



1. M za ni u ta ka o pi mi a ndi o u ta ka o pi mi wa we we_____ he
 2. E ndu gu u te nde ya lo me ma si___ku za mwi sho zi mewa di a_____ hu
 3. Ha pa du ni a ni ni ma pi to sa fa ti ye tu i na tu su bi ri_____ ya

26



sa bu ya ma zu ri_____ pi a na ma ba_____ ya_____
 ju i sa a ya ku_____ ja mwa na wa a da mu_____
 kwe nda mbi ngu ni pi_____ a_____ mo_____ to_____ ni_____