

EE MUNGU WA WOKOVU

Tunaomba Huruma

AMOS EDWARD

1 March, 2022

Dodoma

Zab. 79: 6, 8 - 9

S
A

The Soprano and Alto parts are written on a grand staff with a treble clef and a 3/8 time signature. The Soprano line contains a melody of eighth and quarter notes, while the Alto line provides a harmonic accompaniment with chords and eighth notes. The first five measures of the piece are shown.

Ee Mu ngu wa wo ko vu we tu u tu sa i di e

T
B

The Tenor and Bass parts are written on a grand staff with a bass clef and a 3/8 time signature. The Tenor line contains a melody of eighth and quarter notes, while the Bass line provides a harmonic accompaniment with chords and eighth notes. The first five measures of the piece are shown.

6

The Soprano and Alto parts continue from measure 6 to 10. The Soprano line features a melodic line with a key signature change to one sharp (F#) in measure 7. The Alto line continues with harmonic accompaniment.

kwa a ji li ya u tu ku fu wa ji na la ko u tu o ko e E

The Tenor and Bass parts continue from measure 6 to 10. The Tenor line features a melodic line with a key signature change to one sharp (F#) in measure 7. The Bass line continues with harmonic accompaniment.

12

The Soprano and Alto parts conclude the piece in measures 12 and 13. The Soprano line has a final melodic phrase, and the Alto line provides a final harmonic accompaniment.

Bwa - - na.

The Tenor and Bass parts conclude the piece in measures 12 and 13. The Tenor line has a final melodic phrase, and the Bass line provides a final harmonic accompaniment.

14



1. U si ya ku mbuke ma o o ya ba ba ze tu nakutu pa

20



ti a Re - he ma kwama a na tu me dhi - li ka sa na

25



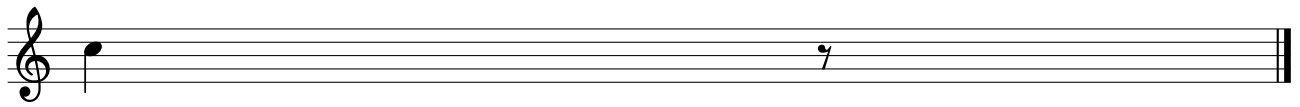
2. U ka li wa ko u wa mwa ngi e Ma ta i fa mata i fa

30



wasi o ku ju a na fa lme za o wasi o li ti i jina la

37



ko.