

Njia Zote za Bwana

Modest E. Tindegizile
Korogwe - Tanga
29/09/2019

Zab:25, 4-8

♩ = 65

1. 2.

Nji a zo te za Bwa na ni fa dhi li na kwe li, kwe - li,

kwe li

Detailed description: This system contains the first five measures of the song. It features a treble and bass clef with a key signature of one sharp (F#) and a 4/8 time signature. The melody is written in the treble clef, and the accompaniment is in the bass clef. The lyrics are: 'Nji a zo te za Bwa na ni fa dhi li na kwe li, kwe - li, kwe li'. There are first and second endings indicated by '1.' and '2.' above the staff.

6 kwa - o wa li shi ka - o A ga no A - ga no,

kwa o kwa o kwa - o wa li shi ka o A ga no,

kwa - o wa shi ka o A ga - no,

kwa - o wa li shi ka o A ga no,

Detailed description: This system contains measures 6 through 11. The melody continues in the treble clef, and the bass clef accompaniment provides harmonic support. The lyrics are: 'kwa - o wa li shi ka - o A ga no A - ga no, kwa o kwa o kwa - o wa li shi ka o A ga no, kwa - o wa shi ka o A ga - no, kwa - o wa li shi ka o A ga no,'.

12 wa li shi ka o A ga no A - ga no na shu hu da za ke.

wa - li shi ka o A ga no A ga - no na shu hu da za - ke.

wa - li shi ka o A ga no A ga no na shu hu da za ke.

Detailed description: This system contains measures 12 through 15, which conclude the piece. The melody and accompaniment continue with the same rhythmic and harmonic patterns. The lyrics are: 'wa li shi ka o A ga no A - ga no na shu hu da za ke. wa - li shi ka o A ga no A ga - no na shu hu da za - ke. wa - li shi ka o A ga no A ga no na shu hu da za ke.'

17



1.EeBwana u ni ju li she nji a za ko u ni fu ndi she ma pi to ya ko

25



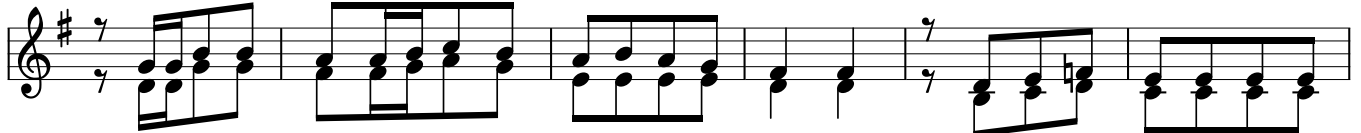
u ni oko e ka ti ka kwe li ya - ko na ku ni fu - ndi sha ma a na ndi we Mu ngu

31



wa wo ko vu wa ngu. 2.EeBwa na ku mbu ka re he ma na fa dhi li za ko
Ma a na zi me ku - wa ko to ke a za ma ni

37



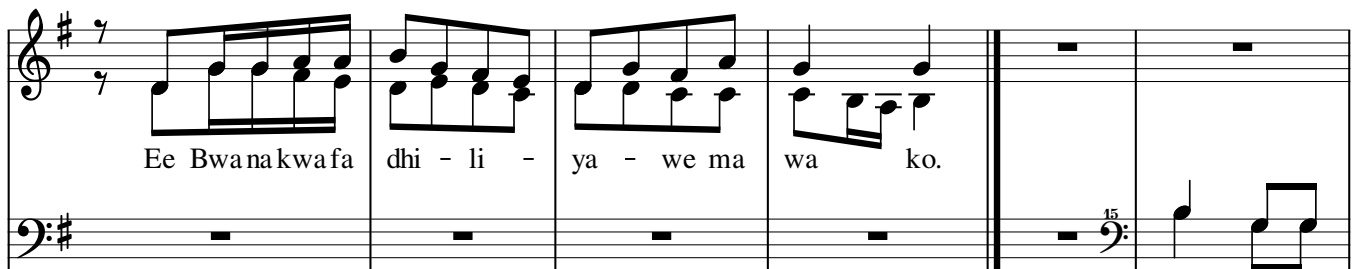
U si ya ku mbu kemako sa ya u ja na wa ko, wa la ma a si ya ngu

43



u ni ku mbu ke kwa ka di ri ya fa dhi li za ko u ni ku mbu ke

49



Ee Bwana kwa fa dhi - li - ya - we ma wa ko.

3.Bwa na yu

55



mwe ma mwe nye a di li, kwa hi yo a ta wa fu ndi sha we nye dha mbi nji

61
15
a, wenye u po le a ta wa o ngo za, ka ti ka hu ku mu, wenye u

66
15
po - le a ta wa fu - ndi sha njia a ya ke.