

Moderato

Ee Mu ngu u ni o ko e, Ee Bwa na u ni sa

The first system of the hymn features a treble and bass clef with a key signature of two sharps (F# and C#) and a 3/8 time signature. The tempo is marked 'Moderato'. The melody is written in a soprano voice line, and the accompaniment is in the bass line. The lyrics are 'Ee Mu ngu u ni o ko e, Ee Bwa na u ni sa'.

i di e hi ma, Ee Bwa na u ni sa i di e hi ma.

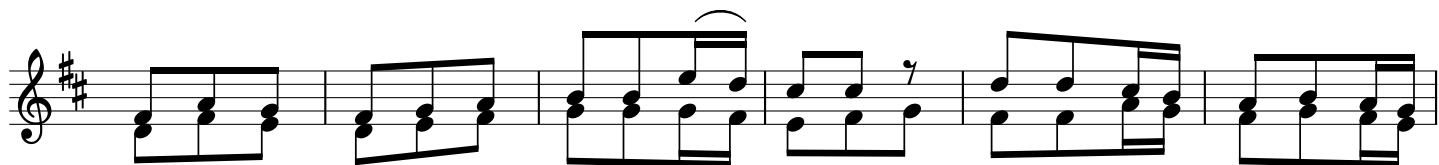
The second system continues the melody and accompaniment. The lyrics are 'i di e hi ma, Ee Bwa na u ni sa i di e hi ma.'.

Ndi we m sa a da wa ngu na mwo ko - zi

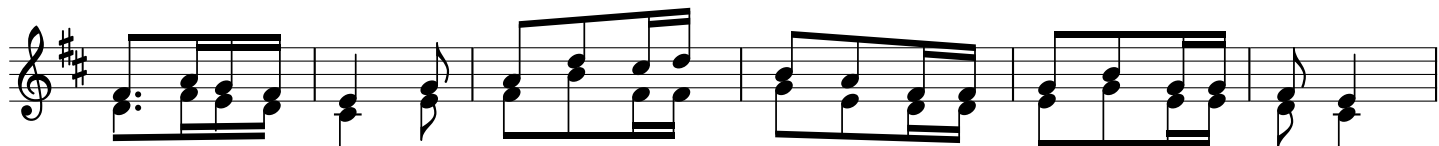
The third system continues the melody and accompaniment. The lyrics are 'Ndi we m sa a da wa ngu na mwo ko - zi'.

wa ngu E e Bwa - na wa ngu u si ka wi e.

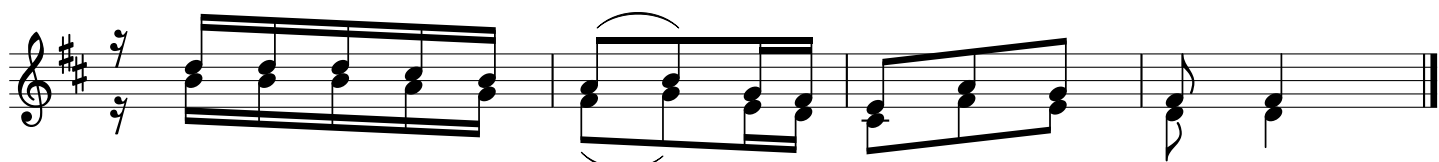
The fourth system concludes the hymn. The lyrics are 'wa ngu E e Bwa - na wa ngu u si ka wi e.'.



1. Na mi ni ma ski ni na m hi ta ji, Ee Mu ngu u ni ji  
2. Wa a i bi - ke wa - fe - dhe - he - ke, wa - na - o i ta fu ta -



li e kwa ha ra ka ndi we m sa a da wa ngu na mwo kozi wa ngu,  
na - fsi - ya ngu wa ru di shwe nyu ma wa - ta ha ya - ri shwe,



Ee Bwa na Mu ngu wa ngu u si ka wi e.  
wa pe - nde - zwa - o na sha - ri ya ngu.