

NINASADIKI

Herfrid Temba
Sinza-Dsm
11/10/2021

♩ = 69

f
Ni na sa di ki(sa di ki) kwa Mu ngu m mo ja

This system contains the first two measures of the piece. The music is in 2/4 time with a key signature of two sharps (F# and C#). The melody is written in the treble clef, and the piano accompaniment is in the bass clef. The lyrics are 'Ni na sa di ki(sa di ki) kwa Mu ngu m mo ja'.

3
kwa Mu ngu m mo ja Mu ngu m mo ja. *mf* Ye ye a li ye

This system contains measures 3 through 5. Measure 3 continues the previous line with 'kwa Mu ngu m mo ja'. Measure 4 has 'Mu ngu m mo ja.'. Measure 5 is a repeat sign followed by 'Ye ye a li ye' in a mezzo-forte (*mf*) dynamic. The piano accompaniment features a steady eighth-note accompaniment.

6
na fsi ta tu, ye ye a li ye na fsi ta tu Mu ngu

This system contains measures 6 through 8. Measure 6 starts with 'na fsi ta tu,'. Measure 7 continues with 'ye ye a li ye'. Measure 8 ends with 'na fsi ta tu Mu ngu'. The piano accompaniment continues with the same eighth-note pattern.

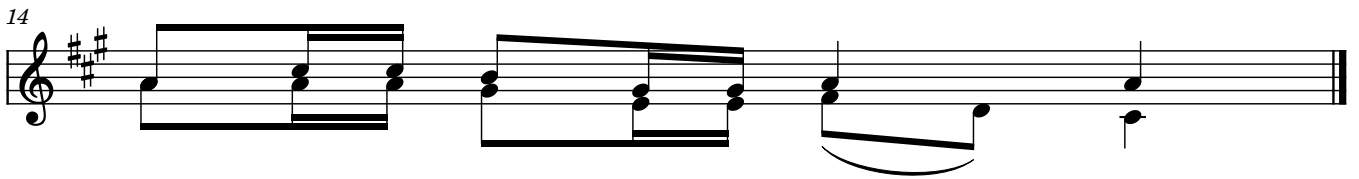
9
f Ba ba Mwa na, na *mf* Ro ho m ta ka ti fu.
ba ba

This system contains measures 9 through 11. Measure 9 starts with 'Ba ba Mwa na, na' in a forte (*f*) dynamic. Measure 10 continues with 'Ro ho m ta ka ti fu.' in a mezzo-forte (*mf*) dynamic. Measure 11 is a repeat sign followed by 'ba ba'. The piano accompaniment concludes with a final chord.

MASHAIRI



1.Ni na msa di ki Mu ngu - Ba ba, ni na i sa di ki ka zi
 2.Ni na msa di ki Mu ngu - Mwa na, ni na i sa di ki ka zi
 3.Ni na msa di ki Mungu Ro ho mta ka ti fu, ni na i sa di ki ka zi



ya ke - ya u u mba ji.
 ya ke ya ku tu ko mbo a.
 ya ke ya ku tu ta ka sa.