

KWA MAANA WEWE U MWEMA

KATIKATI DOMINIKA YA 16 MWAKA A.

BY: TETE L.
ST.JOSEPH-IPOLE

JULY,2020

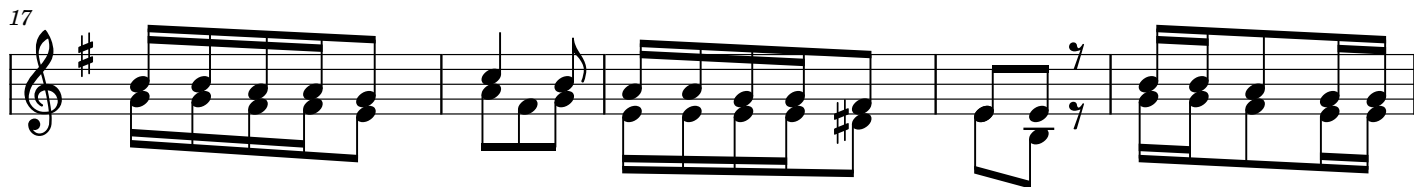
Largo

Musical score for the first system, measures 1-6. The score is in treble and bass clefs with a key signature of one sharp (F#). The tempo is marked 'Largo'. The lyrics are: Kwa ma a na we we we we kwa ma a na we we we we we u mwe ma.

Musical score for the second system, measures 7-12. The score is in treble and bass clefs with a key signature of one sharp (F#). The lyrics are: we we u mwe ma U me ku wa ta - ya ri ku sa me he U me ku - wa ta ya ri ku sa me he u me ku wa ta ya ri ku sa me he.

Musical score for the third system, measures 13-16. The score is in treble and bass clefs with a key signature of one sharp (F#). The lyrics are: ku sa me he ku sa ku - sa me he ku - sa - me he.

MASHAIRI



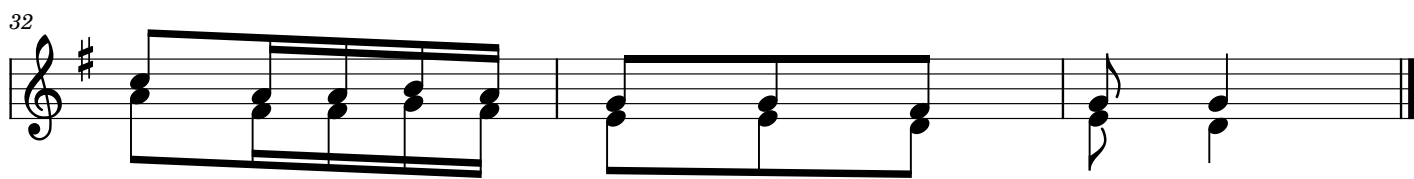
1. we we Bwa na U mwe ma u me ku wa ta ya ri ku sa me he na
2. Ma ta i fa yote u li o wa fa nya wata ku ja wa ta ku su ju
3. La - ki - ni we we we - we Bwa na U Mu ngu wa re



mwi ngi wa fa dhi li kwa wa tu wo te wa ku i ta o
di a we we Bwa na wa ta li tu ku za ji na la ko
he ma na ne e ma m vu mi li vu - mwingi wafa dhi li



Ee Bwa na u ya si ki e ma o mbi ya ngu u i si ki
kwa - ku - wa - ndi ye u li ye mku u we we ndiwe mfa
mwi ngi wa - fa - dhi li na kwe - li - U ni e le



li ze sa u ti ya du a za ngu.
nya mi u ji za ndiwe Mungu peke ya ke.
ke e na ku ni fa dhi li mi mi.