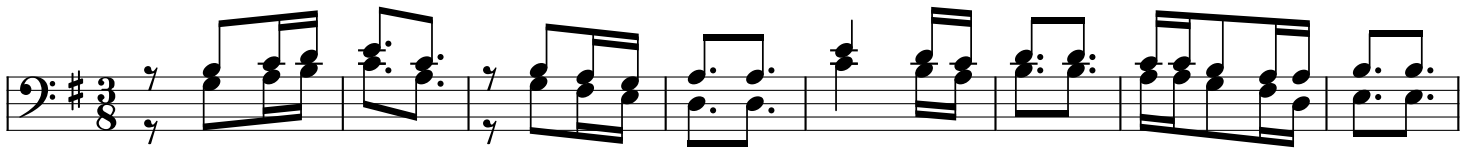


# AHSANTE TWAKUSHUKURU

Fulstan Amani  
Karanga Formation House  
Moshi  
October 21, 2020



1. Twakushu ku ru ee Mungu wa ngu kwa mema yo te u na yo tu te nde a

9

Musical notation for the second system, grand staff, starting at measure 9. It includes vocal lines and piano accompaniment. There are repeat signs and first/second endings.

kwa mo yo m ku nju fu twa ku shu ku ru a sa nte a sa nte

A sa -

15

Musical notation for the third system, grand staff, starting at measure 15. It includes vocal lines and piano accompaniment.

sa nte twa ku shu ku ru ee Bwa na Mu ngu twa ku shu

a sa nte twa ku shu ku ru

nte twa ku shu - ku ru twa

21

Musical notation for the fourth system, grand staff, starting at measure 21. It includes vocal lines and piano accompaniment. It features first and second endings.

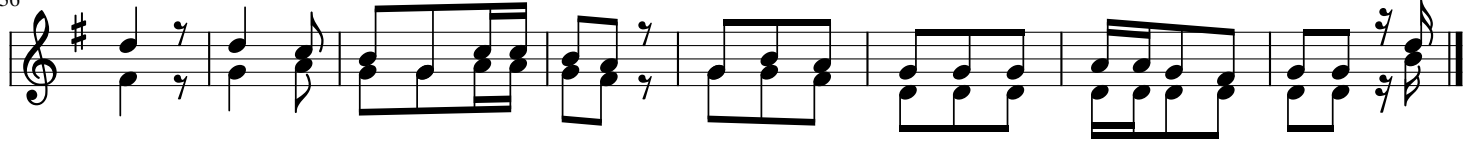
ku ru a sa nte Bwa na Mu ngu A Mu ngu

25



2.Ulikufa msala bani kwaa jili ye tu ni u pe ndo waa ja bu kwetu si si a sa

36



nte ha tu na cha ku ku li pa kwa mo yo mku nju fu kwako tu na se ma a