

KAMA AYALA

Zaburi ya 42

BE. Magilu
Mwenge Parish
02/02/2015
Dar Es salaam

Moderato

mf Ka ma a ya - la ka ma a ya la *mp* ka ma a ya la a i

Dicresc.....

This system contains the first two lines of the musical score. The top staff is in treble clef and the bottom staff is in bass clef. The key signature has two sharps (F# and C#) and the time signature is 3/4. The first line of music includes the lyrics 'Ka ma a ya - la ka ma a ya la' with dynamic markings *mf* and *mp*. The second line includes 'ka ma a ya la a i' with a *mp* marking. The instruction *Dicresc.....* is placed above the second line.

cresc...
mf o ne a vyo sha u ku mi to ya ma ji mi to ya ma ji mi to ya ma - ji.

Mi to ya ma - ji mi to ya ma ji

This system contains the third and fourth lines of the musical score. The top staff includes the lyrics 'o ne a vyo sha u ku mi to ya ma ji mi to ya ma ji mi to ya ma - ji.' with a *mf* marking and a *cresc...* instruction above. The bottom staff includes the lyrics 'Mi to ya ma - ji mi to ya ma ji'.

cresc...
mp Vi vyo hi vyo na fsi ya ngu *mf* vi vyo hi vyo na fsi ya ngu *f* vi vyo hi vyo na fsi ya ngu *mp* na fsi

mp *mf* *f* *mp*

This system contains the fifth and sixth lines of the musical score. The top staff includes the lyrics 'Vi vyo hi vyo na fsi ya ngu vi vyo hi vyo na fsi ya ngu vi vyo hi vyo na fsi ya ngu na fsi' with dynamic markings *mp*, *mf*, *f*, and *mp*. The bottom staff includes the lyrics 'na fsi' with dynamic markings *mp*, *mf*, *f*, and *mp*. A *cresc...* instruction is placed above the first line.

ya ngu i na ku o ne - a i na ku o ne - a sha u ku Mu ngu wa - ngu.

cresc...
ya ngu *f* i na ku o - ne - a sha u ku Mu ngu wa - ngu.

i na ku o ne - a i na ku o ne a sha u ku Mu ngu wa ngu.

This system contains the seventh and eighth lines of the musical score. The top staff includes the lyrics 'ya ngu i na ku o ne - a i na ku o ne - a sha u ku Mu ngu wa - ngu.' with a *cresc...* instruction above. The bottom staff includes the lyrics 'ya ngu i na ku o - ne - a sha u ku Mu ngu wa - ngu.' with a *f* marking. The final line of the system includes the lyrics 'i na ku o ne - a i na ku o ne a sha u ku Mu ngu wa ngu.'



1.Ma cho zi ya ngu Ee Bwa na ya me ku wa ni cha ku la cha ngu m cha na na u si ku m -



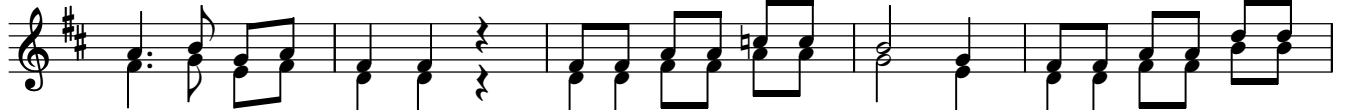
cha na na u si ku, pi ndi wa ni a mbi a po yu ko wa pi Mu ngu



wa ko, yu ko wa pi Mu ngu wa ko, yu ko wa pi Mu ngu wa ko.



2.Ha yo ni na ya ku mbu ka ni na ya ku mbu ka ve ma, ni ki we ka wa zi na fsi ya ngu ni ki



we ka wa zi na fsi ji nsi ni li vyo e ne nda ni o ngo ze ndu gu



za ngu, kwe nda nyu mba ni kwa Bwa na, kwa sa u ti ya ku i mba.



3.Ni ta mu a mbi a Mu ngu mbo na u me ni sa ha u ni na kwe nda ni ki hu zu ni ka, ni na



kwe nda ni ki hu zu ni ka, A du i wa na ni o ne a wa po nda mi fu pa



ya ngu, u ko wa pi Mu ngu wa ngu, u ko wa pi Mu ngu wa ngu.

Imeandikwa na Mashamba, Maximillian Kapesa

Kigamboni Dsm

0752657198/0735657198/0682912668/0673181630