

Grazioso **Ni Shangwe Mtoto Yesu Amezaliwa**

1.

Le - o ni sha - ngwe M-to - to Ye - su a - me za-li wa,

This system contains the first five measures of the piece. It features a piano accompaniment with a melody in the right hand and a bass line in the left hand. The lyrics are: "Le - o ni sha - ngwe M-to - to Ye - su a - me za-li wa,". A first ending bracket is placed over the final measure.

2.

6 tu-me - pe - wa

wa tu - me- pe wa Mto - to mwa - na - mu - me,

tu - me pe - wa

tu - me - pe - wa

This system contains measures 6 through 10. It begins with a second ending bracket over measures 6 and 7. The lyrics are: "tu-me - pe - wa", "wa tu - me- pe wa Mto - to mwa - na - mu - me,", "tu - me pe - wa", and "tu - me - pe - wa".

11

1. tu-me 2.

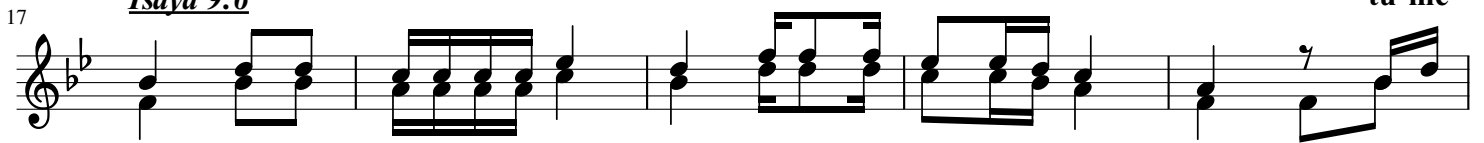
ji na la-ke a - ta - i - twa m - sha - u - ri - wa - a ja - bu, tu - me bu.

tu-me

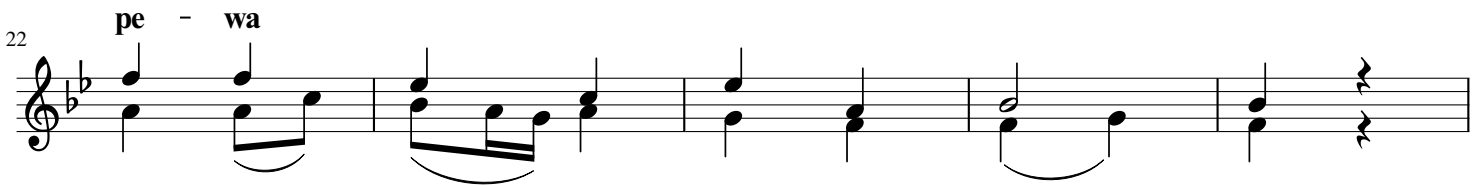
tu - me

This system contains measures 11 through 15. It features two endings. The first ending is over measures 11-14, and the second ending is over measures 14-15. The lyrics are: "ji na la-ke a - ta - i - twa m - sha - u - ri - wa - a ja - bu, tu - me bu.", "tu-me", and "tu - me".

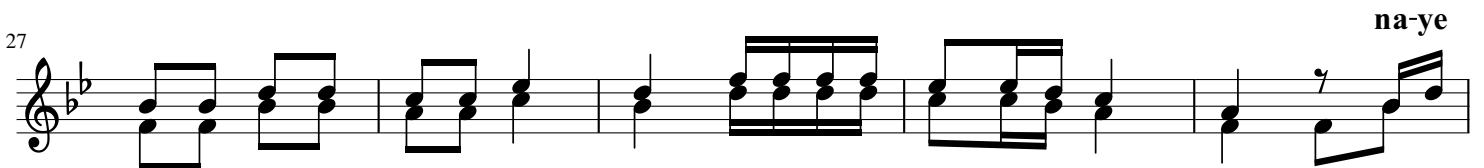
Isaya 9:6



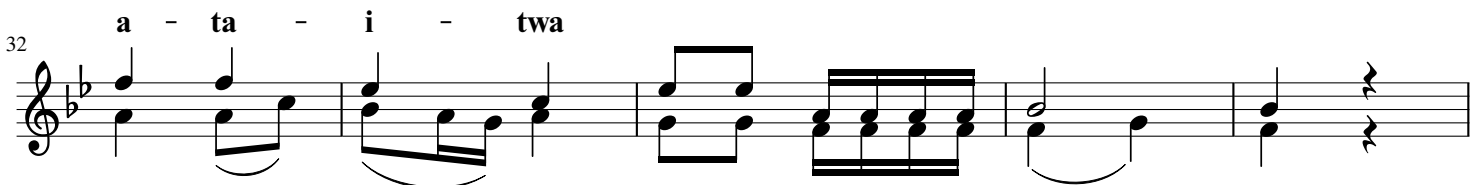
1.Ma - a - na kwa-a - ji - li ye - tu M-to - to a - me - za - li - wa, tu - me



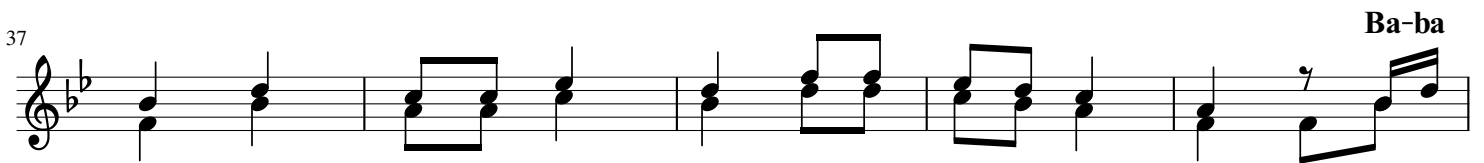
pe - wa Mto - to mwa - na - mu - me.



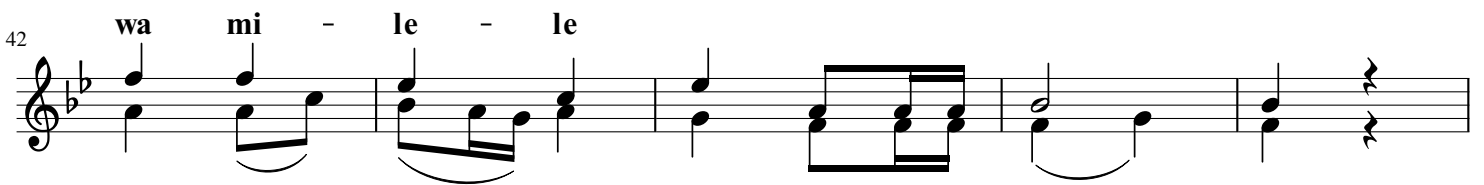
2.Na - u - we - za wa - ki - fa - lme u - ta - ku - wa be - ga - ni mwa - ke, na - ye



a - ta - i - twa m - sha u - ri - wa - a - ja - bu.



3.Mu - ngu mwe - nye ngu - vu Ba - ba wa - mi - le - le, Ba - ba



wa mi - le - le Mfa - lme wa - a ma - ni.