

Nihurumie Ee Mungu

Zab. 51:1-2

Fr. Mark Miradi

Korongoni Parish

18/04/2020

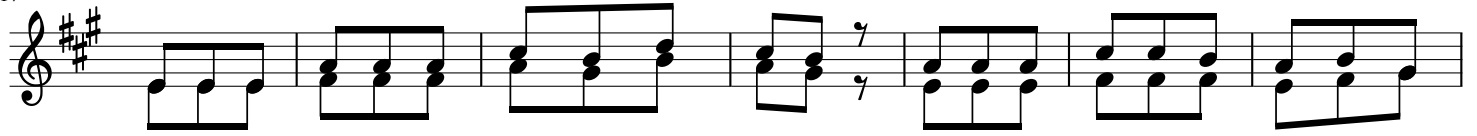
$\text{♩} = 55$ Kwa utulivu

Musical score for the first system, measures 1-6. The score is in 3/8 time with a key signature of three sharps (F#, C#, G#). The tempo is marked as quarter note = 55 (♩ = 55) and the mood is 'Kwa utulivu'. The music is written for piano with a treble and bass clef. The lyrics are: Ni hu ru mi e Ee Mu - ngu wa ngu (Ee Mu ngu ka di ri ya wi ngi U fu ti li e mba li ma ko - sa ya ngu (Ee Bwa na) kwa wi ngi wa - fa

Musical score for the second system, measures 7-12. The score is in 3/8 time with a key signature of three sharps (F#, C#, G#). The tempo is marked as quarter note = 55 (♩ = 55) and the mood is 'Kwa utulivu'. The music is written for piano with a treble and bass clef. The lyrics are: wa hu ruma ya ko. U ni o she ha ti a ya ngu (Ee Bwa na) dhi - li za ko. (ka bi sa)

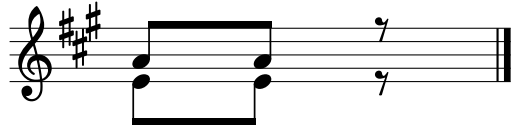
Musical score for the third system, measures 13-16. The score is in 3/8 time with a key signature of three sharps (F#, C#, G#). The tempo is marked as quarter note = 55 (♩ = 55) and the mood is 'Kwa utulivu'. The music is written for piano with a treble and bass clef. The lyrics are: u ni sa fi she dha mbi ya ngu.

17



1. Na ki ri ka bi sa ma ko sa ya ngu u ni sa me he Ee Mu - ngu
 2. U ni ta ka se Ee Mu - ngu wa ngu ni ta ka te ni we ka ma the
 3. U ge u ke usi zia nga lie dhambi za ngu u zi fu te ha tia za - ngu

24



wa ngu
 lu ji
 zo te