

HERI TAIFA

Zab. 32: 1, 12, 18-19, 20-22

Shanel Komba
August, 2010
Kisasa, Dodoma

Wimbo wa katikati:
Jumapili 19, Mwaka C

He - ri ta - i - fa

He - ri ta i - fa (He - ri) ta - i - fa a - mba - lo Bwa - na

He - ri ta - i - fa

Detailed description: This system contains the first six measures of the song. It features a piano accompaniment with a treble and bass clef. The melody is written in the treble clef. The lyrics are placed below the notes. The key signature has one sharp (F#) and the time signature is 3/8.

ni Mungu wa - o

Detailed description: This system contains the seventh and eighth measures of the song. It continues the piano accompaniment and melody from the first system. The lyrics 'ni Mungu wa - o' are placed below the notes.

1. M - pi - gi - e - ni Bwa - na m - pi - gi - e - ni vi - ge - le - ge - le e - nyi we - nye ha - ki, ku - si - fu ku - na - wa - pa - sa

Detailed description: This system contains the first line of the chorus, measures 9-14. The piano accompaniment features a rhythmic pattern of eighth notes. The lyrics are placed below the notes.

1. wa - nyo - fu wa mo - yo (kweli) ku - si - fu ku - na - wa - pa - sa wa - nyo - fu wa mo - yo

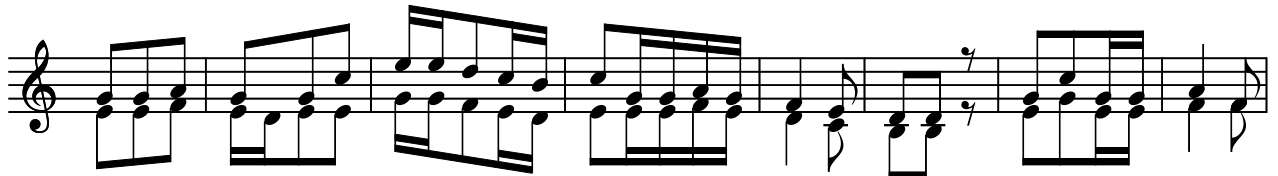
Detailed description: This system contains the second line of the chorus, measures 15-20. The piano accompaniment continues with the same rhythmic pattern. The lyrics are placed below the notes.

2. He - ri ta - i - fa he - ri ta - i - fa a - mba - lo Bwa - na ni Mungu wa - o wa - tu a - lo - wa - cha - gu - a ku - wa

Detailed description: This system contains the third line of the chorus, measures 21-26. The piano accompaniment continues with the same rhythmic pattern. The lyrics are placed below the notes.

2. u - ri - thi wa - ke (wa - tu) wa - tu a - lo - wa - cha - gu - a ku - wa u - ri - thi wa - ke

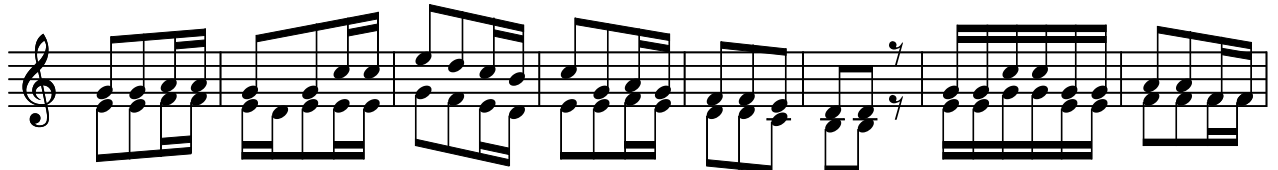
Detailed description: This system contains the fourth line of the chorus, measures 27-32. The piano accompaniment continues with the same rhythmic pattern. The lyrics are placed below the notes.



3. Ta-za-ma ji - cho ta - za-ma ji-cho la Bwana li kwa-o wa - m - cha-o wa-zi-ngo-je - a - o



3. fa - dhi - li za - ke (Bwana) wa - zi-ngo-je - a - o fa - dhi - li za - ke



4. Na-fsi na-fsi ze - tu zi-na - m-ngo-je-a Bwana zi-na - m-ngo-ja Bwana Ye-ye ndiye m-sa - a-da we tu



4. na - nga - o ye - tu (Ye-ye) Ye - ye ndi-ye m - sa - a - da na nga - o ye - tu