

AMINI NAWAAMBIA

Komunio {Alhamisi Kuu}

By. E. Aloyce Magulu

1. 2.

A - mi - ni na wa a - mbi - a a m mo ja ka ti ye nu ni na ye

This system contains the first two lines of music. The top staff is in treble clef and the bottom staff is in bass clef. Both are in the key of D major (one sharp). The music features a melody with eighth and sixteenth notes, often beamed together. There are two first endings marked with '1.' and '2.' above the staff.

1. 2.

ku la pa mo ja na ye a ta ni sa li ti na wa - mbi - a m a je

This system contains the next two lines of music, continuing the melody and accompaniment from the first system. It also includes two first endings marked with '1.' and '2.'.

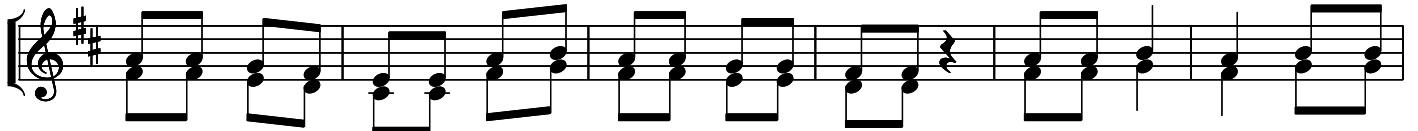
ni mi mi Bwa na je ni mi mi je, ni mi mi Bwa na je ni mi

This system contains the third line of music. The melody continues with a mix of eighth and sixteenth notes. The bass line provides a steady accompaniment with eighth notes and rests.

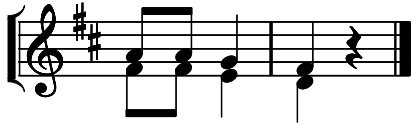
1. 2.

mi je mi.

This system contains the final line of music. The melody is simpler, consisting of a few notes. The bass line has a few chords and rests. It concludes with two first endings marked with '1.' and '2.'.



1. O le wa ke Yu da a li ye m sa - li ti, Ye su Kri stu mwa na
2. A li ye ti am ko no wa ke pa mo ja na mi, ndi ye yu le a ta
3. I nge ku wa He ri kwa ke yu - le - m tu, ka ma a si nga li



wa ke Ba ba.
ni sa li ti.
za - li wa.