

MIMI NDIMI NURU

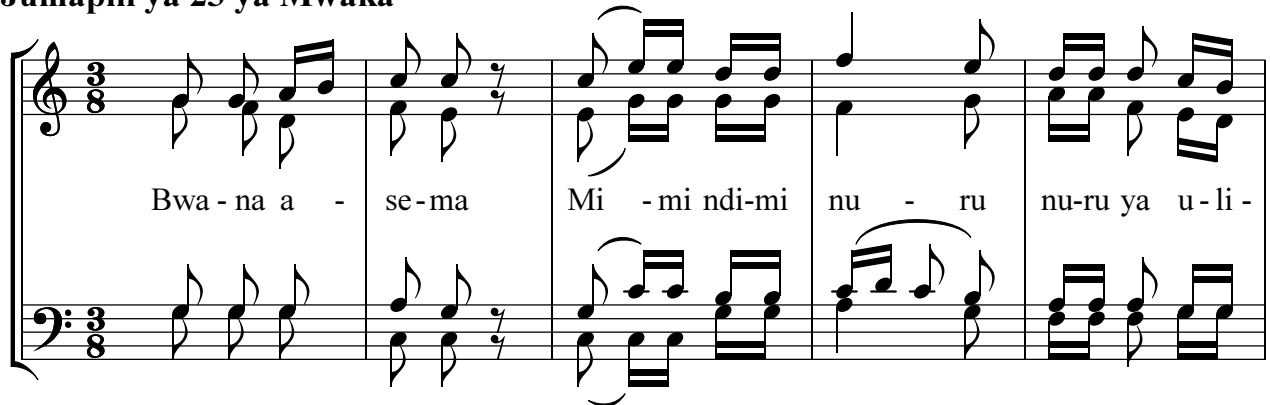
Yn. 8 : 12

Shanel Komba

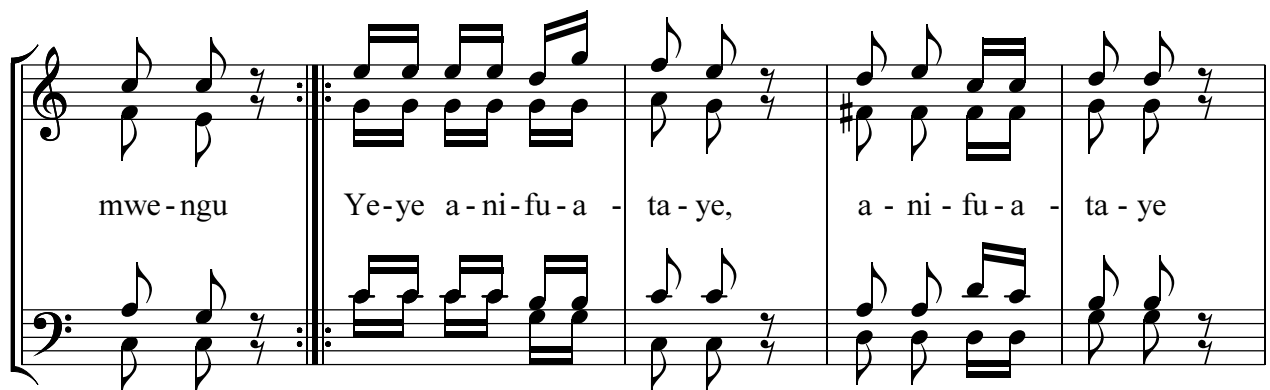
30.08.2021

Dodoma

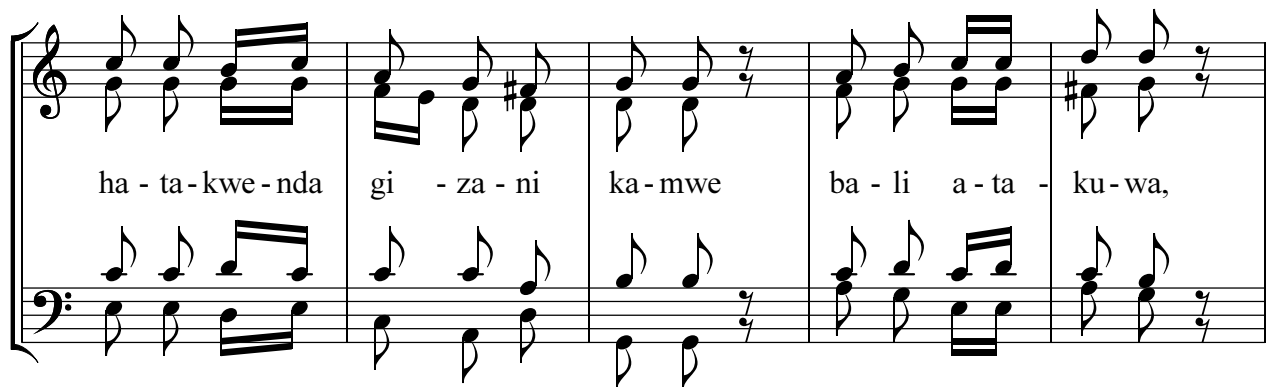
Antifona ya Komunyo
Jumapili ya 23 ya Mwaka



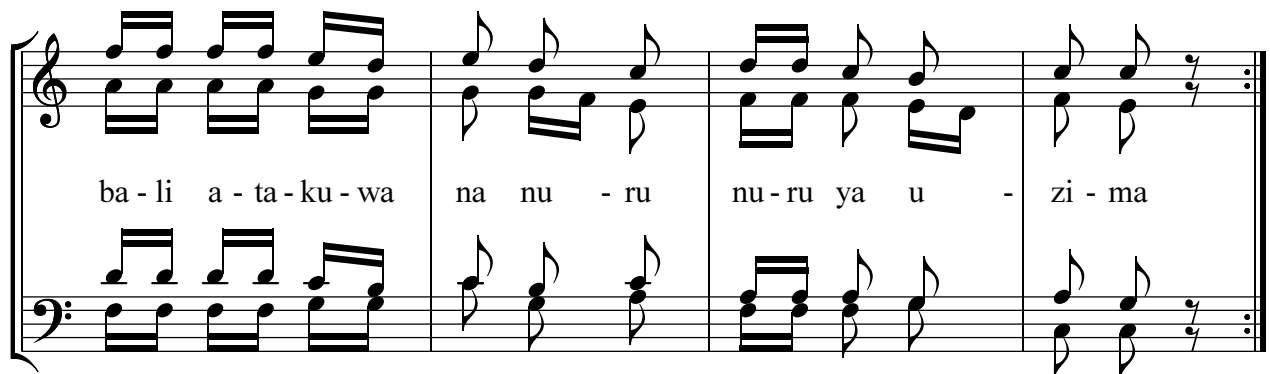
Bwa - na a - se - ma Mi - mi ndi - mi nu - ru nu - ru ya u - li -



mwe - ngu Ye - ye a - ni - fu - a - ta - ye, a - ni - fu - a - ta - ye



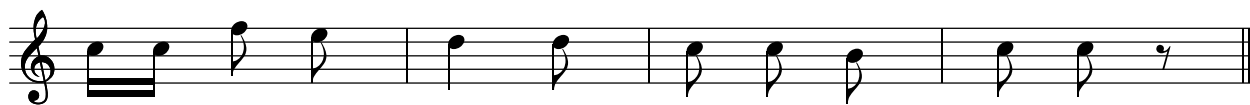
ha - ta - kwe - nda gi - za - ni ka - mwe ba - li a - ta - ku - wa,



ba - li a - ta - ku - wa na nu - ru nu - ru ya u - zi - ma



1. Wa-o wa-ka-mwa - mbi - a wa-ji-shu-hu - di - a mwe - nye-we,



u - shu - hu - da wa - ko si - o wa kwe - li



2. Ye-su a - ka-wa - ji - bu, u-shu-hu - da wa-ngu wa kwe-li,



ni - na - ju - a ni - to - ka - ko ni - na - ju - a ni - e - nda - ko.



3. Ni-nyi m - na-hu - ku-mu mwa-hu-ku-mu kwa she-ri - a za mwi-li



ba - li mi - mi si - hu - ku - mu m - tu