

# YESU TUMEKUJA KUKUABUDU.

Aloyce Goden Kipangula.  
2016.

Ye su (e - we) Ye su, (Ye -su) we - we ni Mu - ngu

6  
we - tu tu - me - ku - ja ku - ku - a - bu du, (Bwa - na) ka - ti - ka ma -

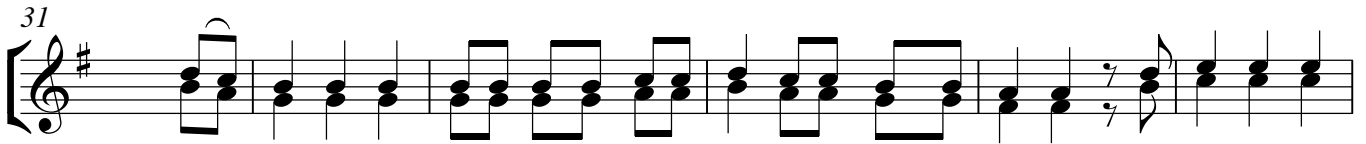
10  
1. u - mbo ha - ya ma - ta - ka - ti - fu; (Ye - su) ti - fu.  
2.

14  
1.Ee\_ Ye - su u - li - ye - ji - fi - cha ka - ti - ka m - ka - te, ni we - we u -

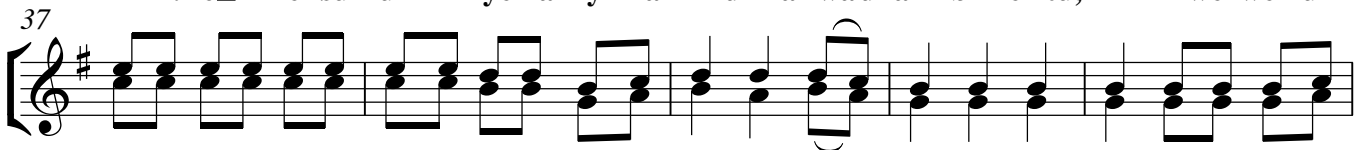
20  
na - ye tu - li - sha ki - la si - ku, Ee\_ Ye - su m - pe - ndwa wa mi - o yo

26  
ye - tu, Ee\_ Ye - su tu - na - ku - a - bu - du.

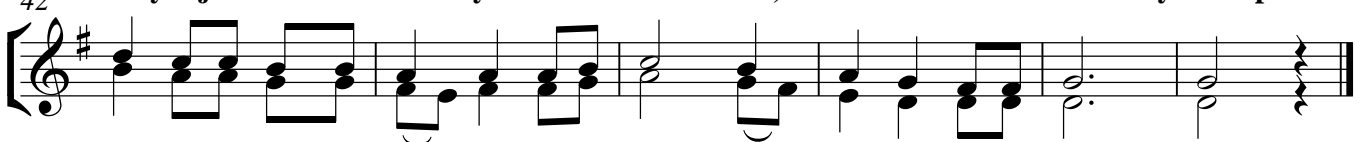
\*N.B. Wimbo huu umerekodiwa na Chang'ombe Catholic Singers.  
ALBUM: Wapitaji na wasafiri; ITHIBATI - JKD/Lit/7/18.



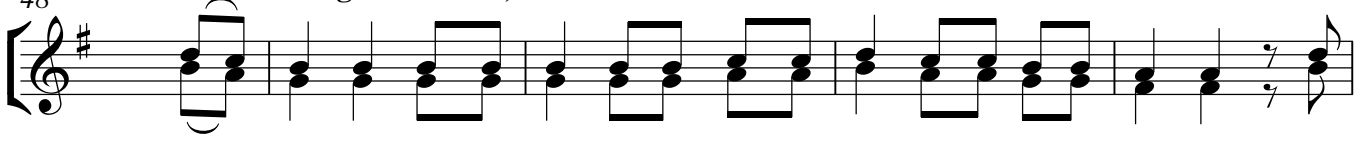
2.Ee\_ Ye-su u - li-ye-fa-nyi-ka fi - di - akwadha-mbi ze-tu, ni we-we u -



li-ye-ji-to-a sa - da-ka ya wo-ko-vu we-tu, ni\_ we-we u - li - ye-tu-pa-ta-



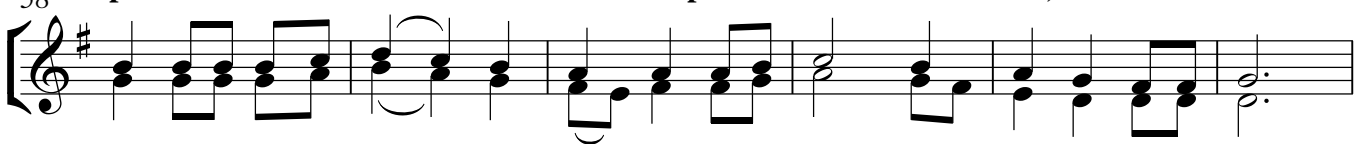
ni-sha na Mu-ngu Ba - ba, Ee\_ Ye - su tu - na - ku - a - bu - du.



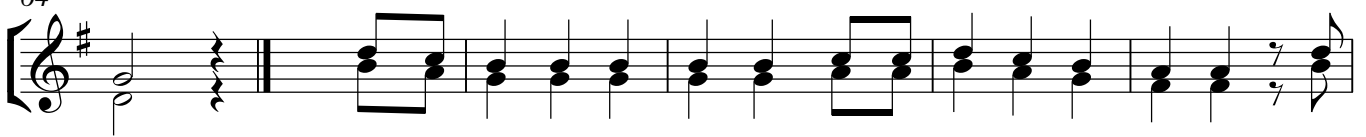
3.Ee\_ Ye - su twa - ku - si - fu, twa - ku - shu - ku - ru, twaku - a - bu - du, na



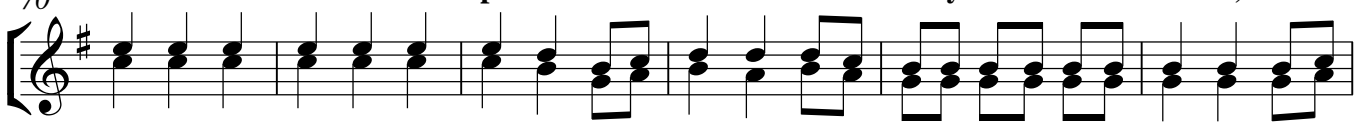
pi - a twa - ku - tu - ku - za kwa ku - tu - pe - nda wa - na - da - mu, Ee\_ Ye - su



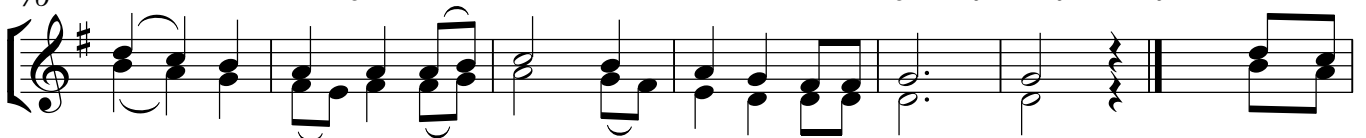
we - we ni tu - ma - i\_ ni le - tu, Ee\_ Ye - su tu - na - ku - a - bu -



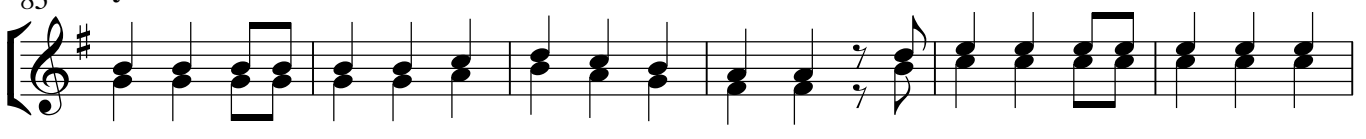
du. 4.Tu - na - pe - nda ku - ka - a mbe - le ya - ko Ee Ye - su, u -



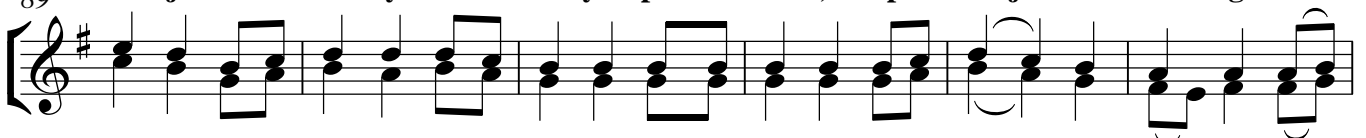
na - tu - fa - ri - ji na ku - tu - ta\_ za - ma, u - na - ju - a yo - te ya - li - yo - mo mi - o -



yo\_ ni mwe - tu Ee\_ Ye - su tu - na - ku - a - bu - du. 5.Tu - me



ku - ja na mi - o - yo i - li - yo - po - nde - ka, pa - mo - ja na mi - zi - go i -



na - yo tu - su - mbu - a, tu - na - le - ta kwa - ko Ye - su ki - o - ngo\_ zi we - tu, Ee\_

95

102 Ye - su tu - na - ku - a - bu - du. 6.Ni we - we u - na - ye tu -

108 po - nya ma - go - njwa yo - te, ni we - we u - na - ye - tu - ja - li - a u - zi - ma, u -

112 si - ku na m - cha - na ki - la si - ku wa - tu - li - nda, Ee -

Ye - su tu - na - ku - a - bu - du.