

WATU WOTE WAKUSHUKURU

Elia Temihanga Makendi
Tumaini University(IRA)
2010

♩ = 75

S
A

Wa tu na wa ku shu ku ru wa tu
wa tu wo te

T
B

na wa ku shu ku ru wa tu wo te

Detailed description: This block contains the first five measures of the song. It features two vocal parts: Soprano/Alto (S/A) and Tenor/Bass (T/B). The S/A part starts with a treble clef, a key signature of two sharps (F# and C#), and a 2/4 time signature. The T/B part starts with a bass clef, the same key signature, and time signature. The lyrics are: 'Wa tu na wa ku shu ku ru wa tu wa tu wo te' for S/A and 'na wa ku shu ku ru wa tu wo te' for T/B.

6

na wa ku shu ku ru Ee Mu ngu, ngu na wa ku shu ku ru na wa

Detailed description: This block contains measures 6 through 11. The S/A part has a treble clef and includes first and second endings. The lyrics are: 'na wa ku shu ku ru Ee Mu ngu, ngu na wa ku shu ku ru na wa'. The T/B part has a bass clef and continues the accompaniment.

12

ku shu ku ru wa tu wa tu
ku shu ku ru wa tu wo te na wa ku shu ku ru Ee Mu ngu,

wa tu wo te

Detailed description: This block contains the final four measures (12-15) of the song. The S/A part has a treble clef and includes a first ending. The lyrics are: 'ku shu ku ru wa tu wa tu ku shu ku ru wa tu wo te na wa ku shu ku ru Ee Mu ngu,'. The T/B part has a bass clef and concludes the piece.

18

ngu.

19

1. Mungu na a tu fa dhi li na ku tu ba ri ki na ku tu a nga zi a u so wa ke nji a

24

nji a ya ke i ju li ka ne du ni a ni wo - ko vu wa ke - ka ti ka ti yama ta i fay o

30

te.

31

2. Mata i fa ma ta i fa na wa sha ngi li e na a m wa i mbewa i mbe kwa fu

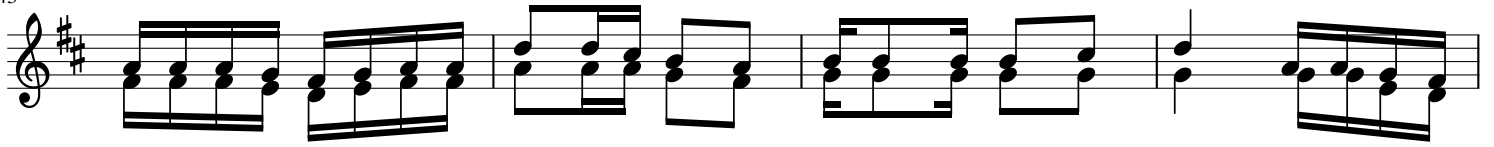
35

ra ha maa na ma a na kwa ha ki u ta wa hu ku mu wa tu na ku wa o ngo za -

40

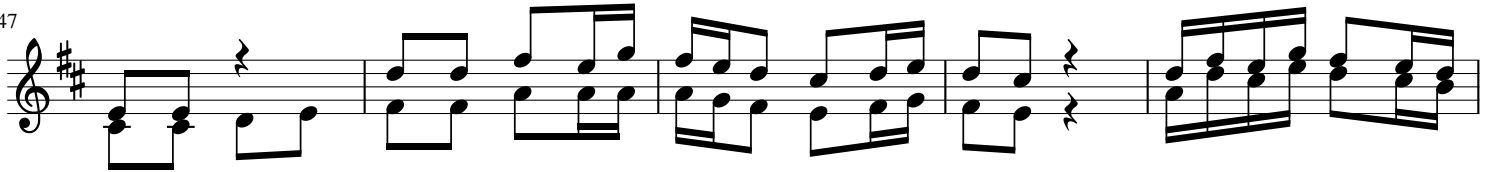
ma ta i fa wa li o du ni a wa ni.

43



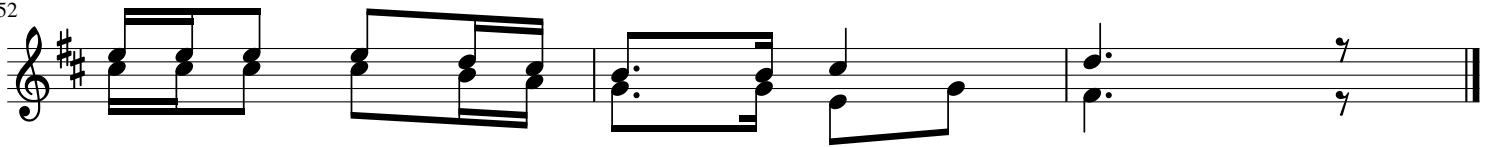
3.N chi n chi i me to a ma za o ya ke Mu ngu Mu ngu we tu a me tu ba

47



ri ki Mu ngu Mu ngu a ta tu - ba - ri ki - si si mi i sho yo - te -

52



ya du ni a i ta m cha ye ye.