

EWE MAMA MARIA TUOMBEE

Elia Temihanga Makendi

St. Paul Choir-Kihesa

October 2010

$\text{♩} = 65$

S
A

E we Ma ma - Ma ri a ma ma ye tu mwe ma tu o mbe e kwamwa

T
B

6

na o Ye su.

8

1.Chombo cha - i ba da tu na ku o mba ma ma u tu o mbe e

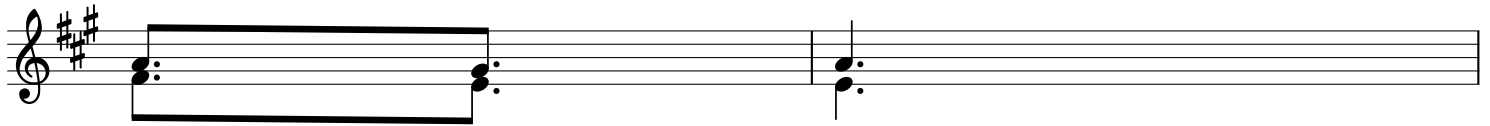
14

tu o mbe e kwa Mu ngu.

17

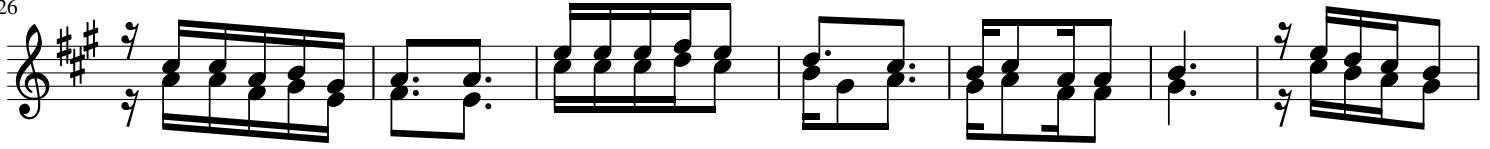
2.M na ra wa Da u di tu na ku o mba ma ma u tu ombe e tu ombe e

24



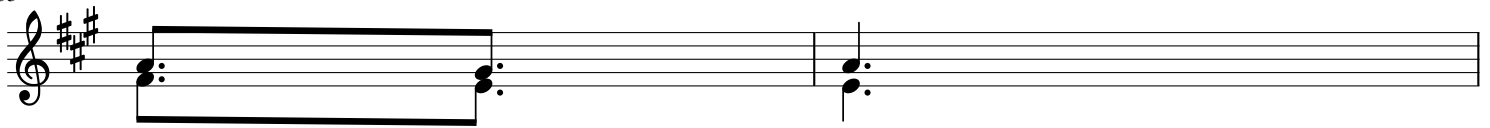
kwa Mu ngu.

26



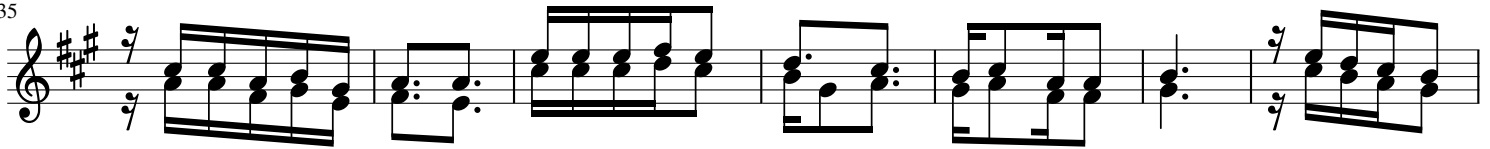
3.Wa ri di le nye fu mbo tu na ku omba ma ma u tu ombe e tu ombe e

33



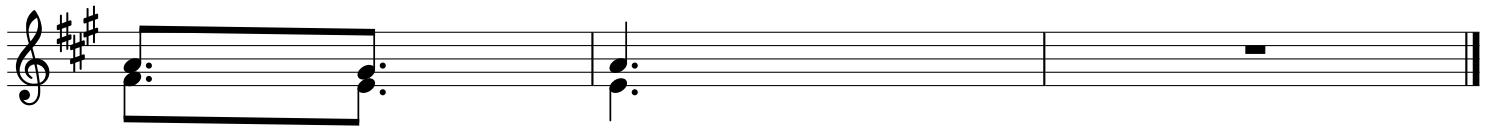
kwa Mu ngu.

35



4.Sandu ku la a ga no tu na ku omba ma ma u tu ombe e tu ombe e

42



kwa Mu ngu.